



X²CESSORIES SQUARED

Development & Manufacturing Inc.
Traffic Sign Support Products

Contact your local Xcessories Squared distributor for options, pricing, and availability.

Products are Made in the USA.

DEALER INFORMATION GOES HERE

www.x-sqrd.com



info@x-sqrd.com

800-621-7948

X2CATS23

Multi-Directional,
Ground-Mounted Sign Post Slip,
and Breakaway Systems

MASH COMPLIANT

Your total sign support product line starts here.

Fabricated Structures
Breakaway Bases
Sign Posts
Sign Bracing
Clamps, Brackets, &
Related Hardware
Anchor-Driving Equipment

We not only manufacture to state and FHWA requirements but are continually involved in product design and development in conjunction with highway departments' needs and requests.

www.x-sqrd.com

Index

Slip and Frangible Systems _____ 4

Mid-Size Slip Base Systems _____ 5

Kleen Break (for 2" square posts) _____ 6 - 7

Redi-Torque (for 2½" sq. & 2⅞" rd.) _____ 8 - 9

MASSH-400 (for 4" square posts) _____ 10 - 11

Adjust-A-Sign Aluminum Brace System _____ 12 - 15

Product Part Numbers _____ 16 - 19

Contact Information:

Auburn, IL	PH: 800-621-7948	FAX: 217-438-3917
Goodyear, AZ	PH: 623-882-1153	FAX: 623-882-1174 (CA, NV, UT, AZ, NM)
Technical Assistance:	Matt Leahy _____ mleahy@x-sqrd.com	Greg Kirchgesner _____ gkirchgesner@x-sqrd.com
Customer Service:	Traci Beck _____ tbeck@x-sqrd.com	Tracy Audi _____ taudi@x-sqrd.com
Internal Sales:	Andrew Reinert _____ areinert@x-sqrd.com	
Shipping Department:	Brian Leanard _____ bleanard@x-sqrd.com	

info@x-sqrd.com

www.x-sqrd.com

About Us

Larry Leahy started Xcessories Squared in 1988, and he has been in the traffic/sign support industry for nearly 50 years. Our team boasts more than 150 years of combined experience in product development, technical knowledge, and sales.

We manufacture to ASSHTO and FHWA requirements and are continually involved in product design and development in conjunction with transportation departments' needs and requests. Xcessories Squared fabricates many sign structures for states per their standards, so we can work directly with transportation departments for total documentation and specification support.

In addition, we've been involved with Task Force 13 for 25 years and with AFB Technical Committee on Roadside Safety. We have also run numerous tests in accordance with MASH-16 criteria.

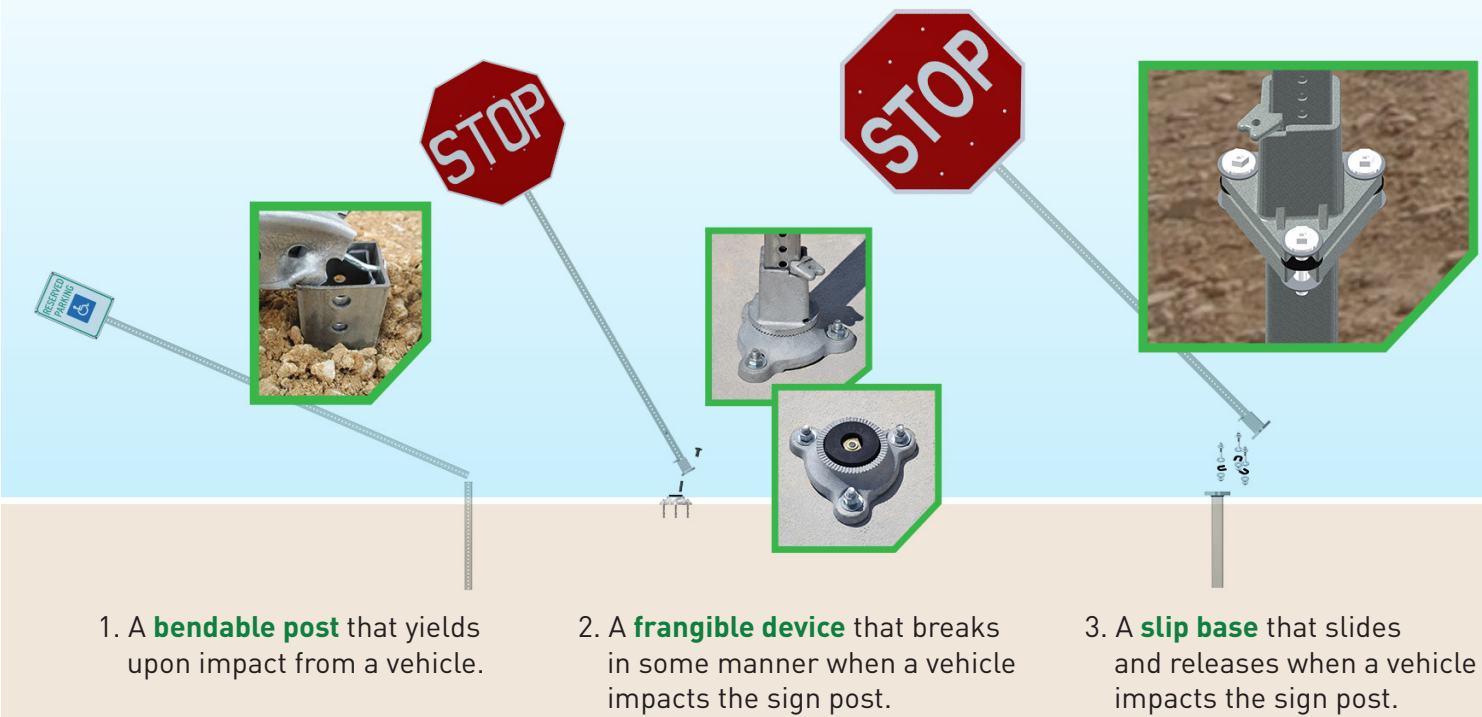
When you work with Xcessories Squared, you'll see that solving problems with innovative designs is one of our most important strengths. From slip base to break-away bases, sign posts, sign bracing, and all clamps, brackets, and related hardware, your total sign support product line starts here.

Xcessories Squared
Products are
**PROUDLY MADE,
MELTED, AND
MANUFACTURED
IN THE USA!**



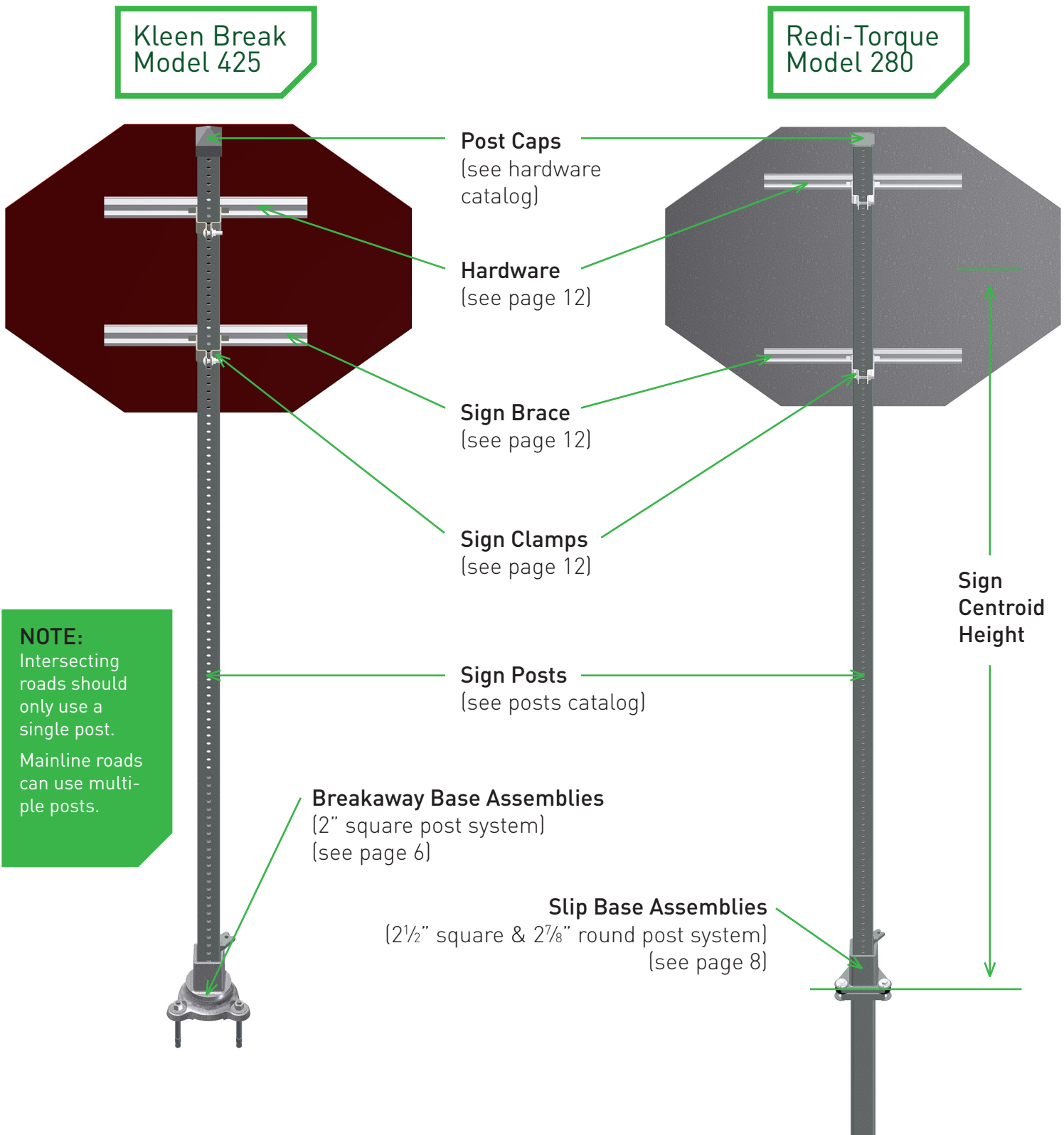
NOTE: MASH requires any new sign installation must have been successfully tested at 0° and at 90° to be used at an intersecting road.

Sign post systems are placed into three categories as shown:



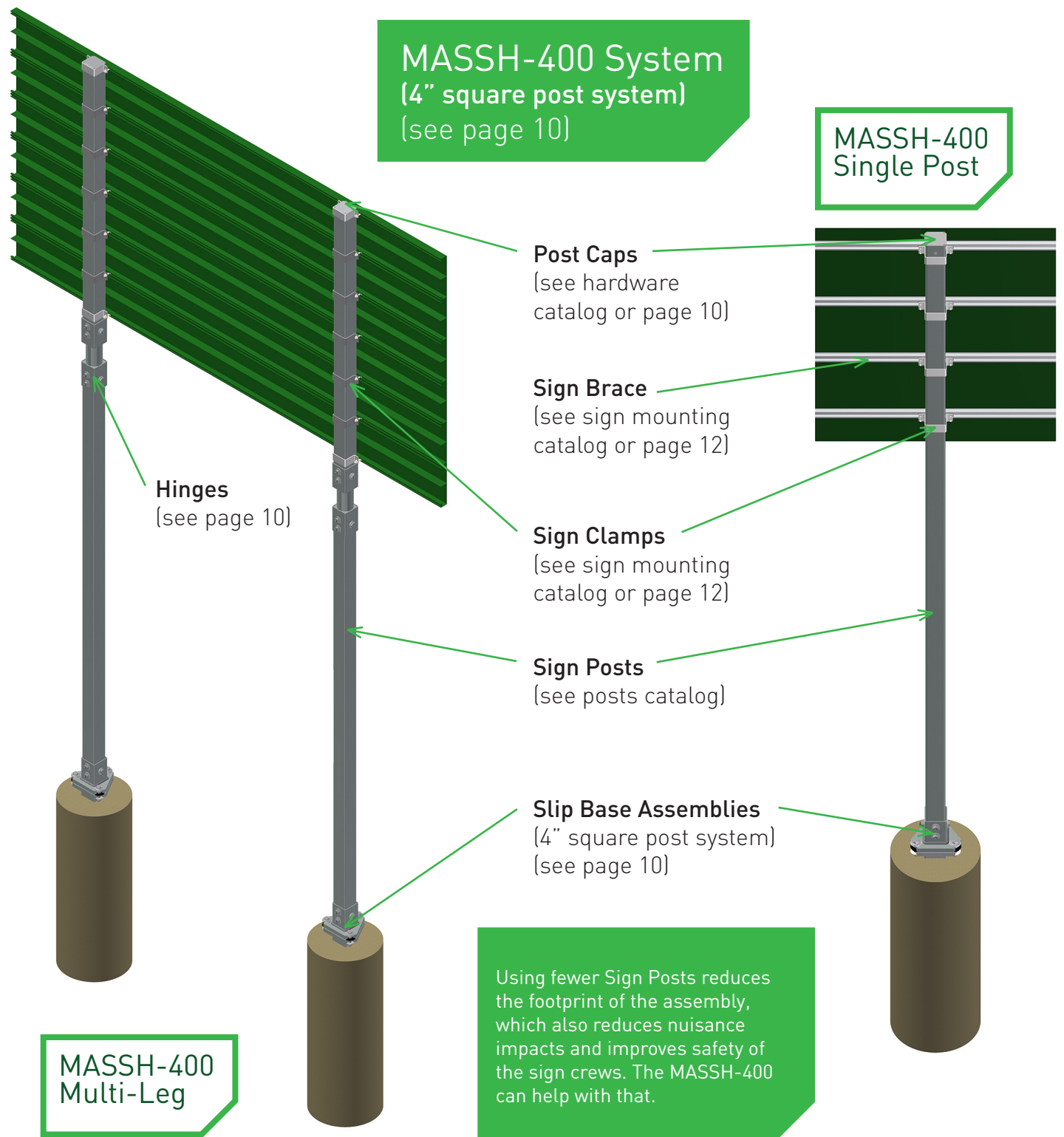
Sign Post Slip and Breakaway Systems (for 2" square, 2½" square, and 2⅞" round posts)

(small to intermediate signs up to 60ft² on 3 posts)



Sign Post Slip and Breakaway Systems (for 4" x 8ga square posts)

(intermediate to large signs up to 128ft² on 3 posts)



Kleen Break Model 425 Sign Post Coupler System

NCHRP 350 Compliant/FHWA Letter SS-131

Complete Assemblies for 2" Square Post

Xcessories Squared manufactures an NCHRP 350 crash-tested Kleen Break, which is a frangible device. The multi-directional breakaway Kleen Break is 360° indexable allowing exact orientation of the sign panel after the Kleen Break anchor is secured. It is capable of holding 100% of the strength capacity of the sign post. The most important aspect of any sign support product is the speed and ease of both installation as well as reinstallation. The material needed for reinstallation is also very important. The Kleen Break typically only requires a shear bolt set to be replaced, which is much less costly than replacing a frangible casting.



	90 MPH		120 MPH	
Centroid Height	2"x14ga. PSST	2"x12ga. PSST	2"x14ga. PSST	2"x12ga. PSST
16'	5.36 ft²	6.68 ft²	2.90 ft²	3.65 ft²
14'	6.12 ft²	7.64 ft²	3.32 ft²	4.17 ft²
12'	7.14 ft²	8.91 ft²	3.87 ft²	4.86 ft²
10'	8.57 ft²	10.7 ft²	4.64 ft²	5.83 ft²
8'	10.7 ft²	13.3 ft²	5.80 ft²	7.29 ft²

NOTE: Table is for a single post. Multiply values by 2 and 3 posts as necessary. Intersecting roads should only use a single post. Mainline roads can use multiple posts.

LWX35 Post to Coupler Locking Wedge

TX200 2" Square Post Receiver

SBH 5/8"-11x4" Model 425 Shear Bolt (with hardware)

RB30 3" O.D. x 1.3" I.D. x 0.825" Rubber Bushing

KB1
Complete Assembly

CKBA
Kleen Break Anchor for Concrete - 8"

SMKB3
Kleen Break Surface Mount Anchor

XKBWS
Kleen Break Shear Bolt 1/2" Socket

WB50
1/2" x 4" Threaded Wedge Bolt

DCA58
1/2" x 5 1/2" Expansion Anchor

For PSST items see posts catalog

For Clamps and Bracing see page 12

Redi-Torque Model 280 Slip Base System

MASH-16 COMPLIANT (and Previously NCHRP 350 Compliant/FHWA Letter SS-134 & SS-175)

Assemblies & Components for 2½” Square Posts and for 2⅞” Round Posts

Xcessories Squared manufactures several MASH-16-compliant crash-tested Redi-Torque Multi-Directional Slip Base Assemblies. A Slip Base contains three segments: a top post receiver, a match-plate hardware set, and some type of anchor. The top and the bottom must have matching slip plates. We manufacture top post receivers for 2⅞” OD round posts as well as 2½” square posts. We manufacture the Redi-Torque match-plate hardware, which does not require a torque wrench to install. We also manufacture unibase anchors for soil applications, concrete surface applications, as well as wet concrete applications.



	90 MPH				120 MPH			
Centroid Height	2½”x12ga. PSST	2½”x10ga. PSST	2⅞”x10ga. ROUND	2½”x10ga. inserted with 2⅞”x10ga.	2½”x12ga. PSST	2½”x10ga. PSST	2⅞”x10ga. ROUND	2½”x10ga. inserted with 2⅞”x10ga.
16’	10.7 ft²	12.4 ft²	12.5 ft²	21.7 ft²	3.6 ft²	5.9 ft²	7.0 ft²	12.0 ft²
14’	12.3 ft²	14.2 ft²	14.3 ft²	24.8 ft²	4.1 ft²	6.7 ft²	8.0 ft²	13.6 ft²
12’	14.3 ft²	16.5 ft²	16.7 ft²	29.0 ft²	4.8 ft²	7.8 ft²	9.4 ft²	15.9 ft²
10’	17.2 ft²	19.8 ft²	20.0 ft²	34.7 ft²	5.8 ft²	9.4 ft²	11.2 ft²	19.1 ft²
8’	21.5 ft²	24.8 ft²	25.0 ft²	43.4 ft²	7.2 ft²	11.8 ft²	14.1 ft²	23.9 ft²

NOTE: Table above is for a single post. Multiply values by 2 and 3 posts as necessary. Intersecting roads should only use a single post. Mainline roads can use multiple posts.

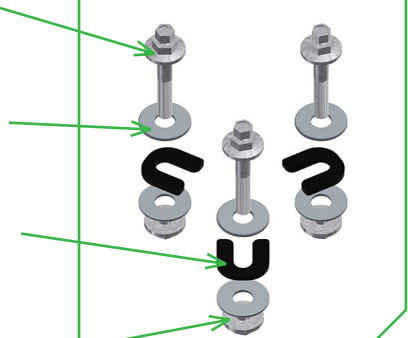
RTB50 Redi-Torque Model 280 ½”-13 x 3” gr.8 Double Hex Bolt

FW58 ⅝” Flat Washer

TCS175 1¾” sq. x ⅜” Thick Teflon-Coated Plate Separator

G8LFN ½”-13 x 3” gr.8 Large Flange Nut

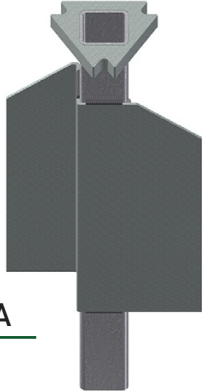
RTSB-MPHDW
Redi-Torque
Hardware Kit



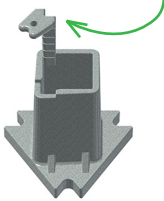
SBX-CTA
Unibase Assembly for Concrete



SBX-CTWA
Unibase Assembly for Soil

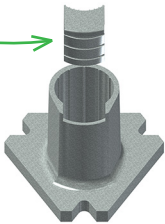


LWX35F
Post Locking Wedge for Square Post



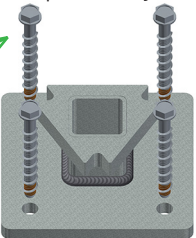
SBX-CSQ
Slip Base Top for 2½” Square Post

LWXRD
Post Locking Wedge for Round Post



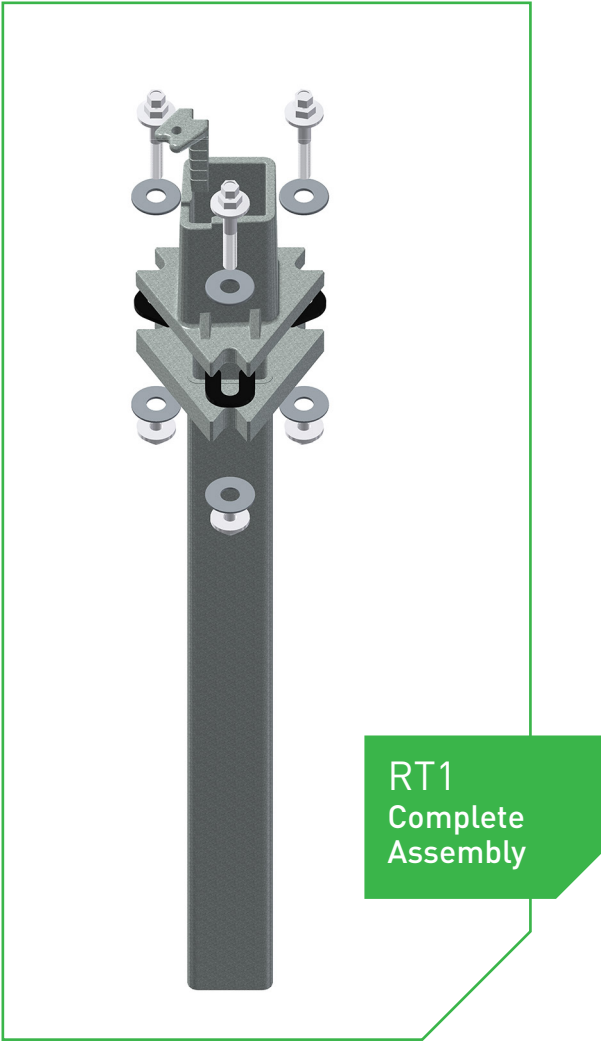
SBX-CRD
Slip Base Top for 2⅞” Round Post

WB58
⅝” x 6” Threaded Wedge Bolt (sold separately)



SMSB
Surface Mount Slip Base Assembly

For Clamps and Bracing see page 12



MASSH-400 Multi-Directional Sign Support Hardware System

MASH-16 COMPLIANT (FHWA Letter SS-180 & SS-182)

Assemblies & Components for 4" x 8ga Square Post Sign Structures

Xcessories Squared manufactures the MASH-16-compliant crash-tested MASSH-400 Multi-Directionally Activated Sign Support Hardware System. It is designed to be used in place of several W-beam ground-mounted sign structures. It can be custom cut to size in your shop or at the roadside. It is much quicker to install than a standard W-beam structure, which helps with the safety of your highway crews. It can also be immediately reinstalled if impacted.



		90 MPH Single Post			
		Sign Width (ft.)			
Sign Height (ft.)	14'				
	12'				
	10'				
	8'				
	6'				
	4'				
	2'				

		90 MPH Two Post					
		Sign Width (ft.)					
Sign Height (ft.)	14'						
	12'						
	10'						
	8'						
	6'						
	4'						
	2'						

SBPCS Sign Brace
Post Clamp for ASB200
Sign Brace

EPPCS Extruded Panel
Post Clamp for Extruded
Panels

X4HRK Hinge Repair Kit
(tube, bolts, washers)

X4HSL Hinge Replacement
Sleeve

4" x 8ga Galvanized Post

X4HDW
Hardware Replacement
Set for Post Attachment (3 ea.)

RTSB75
Redi-Torque Match-Plate
Hardware Kit for 4" SQ Post

X4SQCC Closure Cap for 4" SQ Post

UPCSQA Universal Post Clamp
for ASB200 Sign Brace

UPCSQ Universal Post Clamp
for Extruded Panels

X4HINGE
Hinge Assembly for
4" SQ Post

SB13SQR
13" Slip Base
Top for 4"
SQ Post

SB13CTA
13" Unibase
Assembly
for Concrete

RTX400
13" Slip Base Assembly -
Concrete for 4" SQ Post

For Clamps and
Bracing see page 12

Adjust-A-Sign Bracing and Brackets for Ground-Mounted Sign Support Systems

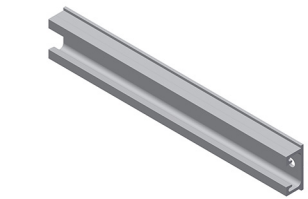
MASH-16 COMPLIANT

Xcessories Squared manufactures several MASH-16-compliant aluminum sign braces that provide additional support to the flat sign panels. Additionally we manufacture several brackets that fit standard extruded panel signs as well as all of our aluminum sign braces. Each sign bracket can hold up to 10ft² of sign area. All of our brackets are designed to be easily installed directly into the sign brace channels or extruded panel channels. Xcessories Squared provides several types of sign drive rivets; many are available in common sign panel colors.



Sign Width (ft.)	Maximum Vertical Spacing of Aluminum Bracing					
	1 POST (50-50%)		2 POSTS (20-60-20%)		3 POSTS (15-35-35-15%)	
	Left	Right	Outer	Inner	Outer	Inner
4'	12"	36"				
6'	12"	36"	12"	36"		
8'			12"	36"	12"	36"
10'			12"	36"	12"	36"
12'			12"	28"	12"	36"
14'			10"	20"	12"	36"
16'			7"	15"	12"	36"

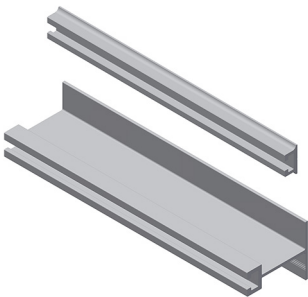
NOTE:
Aluminum Sign Braces have standard lengths of 12' and 24'.



ASB200
ASB200P1
ASB200P6

2" Aluminum Sign Brace - Plain
2" Aluminum Sign Brace - 3/8" Holes at 1" Spacing
2" Aluminum Sign Brace - 3/16" Holes at 6" Spacing

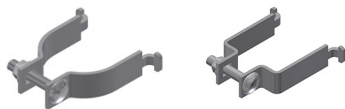
Sign Braces



ASB125
TSB25X3

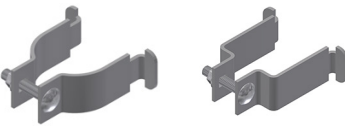
1 1/4" Aluminum Sign Brace - Extruded Panel Channel
Aluminum T-Sign Brace with Channel - 2 1/2" x 3"

ASB200 series works with SBPCS series.
ASB125, and TSB25X3 work with EPPCS series.



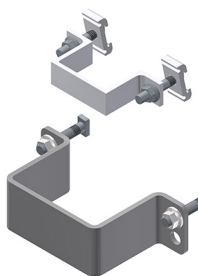
EPPCS

Extruded Panel Post Clamp Set - Stainless Steel (available for 2", 2 1/4", 2 1/2", 3", 4", & 5" square posts and for 2 3/8", 2 7/8", 3 1/2", 4", 4 1/2", 5", & 6" OD round posts)



SBPCS

Sign Brace Post Clamp Set - Stainless Steel (available for 2", 2 1/4", 2 1/2", 3", & 4" square posts and for 2 3/8", 2 7/8", 3 1/2", 4", & 4 1/2" OD round posts)



UPCA250

Universal Post Clamp - Aluminum for 1/2" Square Post

Post Clamp Sets



UPC400

Universal Post Clamp - Stainless Steel for 4" Square Post



QLBAA

Quick Lock Bolt Adapter - Aluminum for ASB200



ST1050

Self-Drilling Tapping Hex Head Screw

MISC.



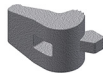
SPDRA316

3/16" Aluminum Drive Rivet



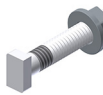
DRAS3878

3/8" Aluminum Drive Rivet with Attached Nylon Washer



BC_38

Die-Cast or Sand-Cast Aluminum "J-Type" Clamp



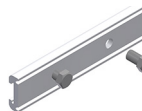
THB_38
&
CHFN38

T-Head Bolt 3/8" x 2" (or 3") - SST or Aluminum
Case-Hardened Flange Nut 3/8" - Zinc Plated



RHB_38

Rectangle Head Bolt 3/8" x 1 3/4" - SST or Aluminum



ASB-SPLC

6" Aluminum Splice for Use with ASB200 Series Brace

Adjust-A-Sign Bracing and Brackets for Ground-Mounted Sign Support Systems



(SBPCS) Square Post Sign Brace Post Clamp Sign Bracket installation is simple.

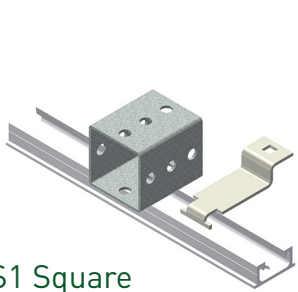


FIG. S1 Square

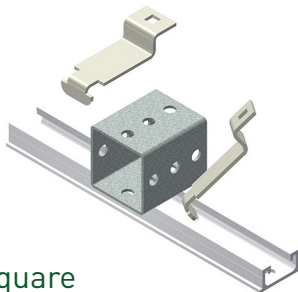


FIG. S2 Square

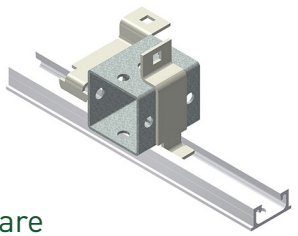


FIG. S3 Square

(EPPCS) Round Post Extruded Panel Post Clamp Sign Bracket installation is simple.

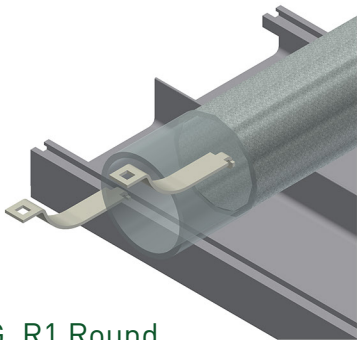


FIG. R1 Round

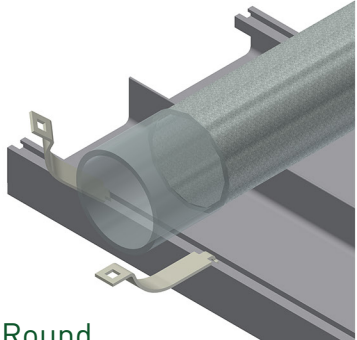


FIG. R2 Round

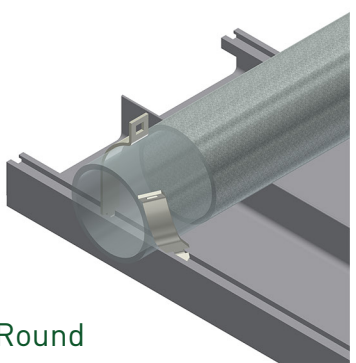
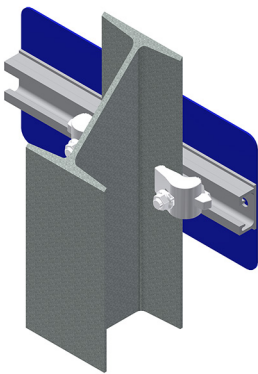
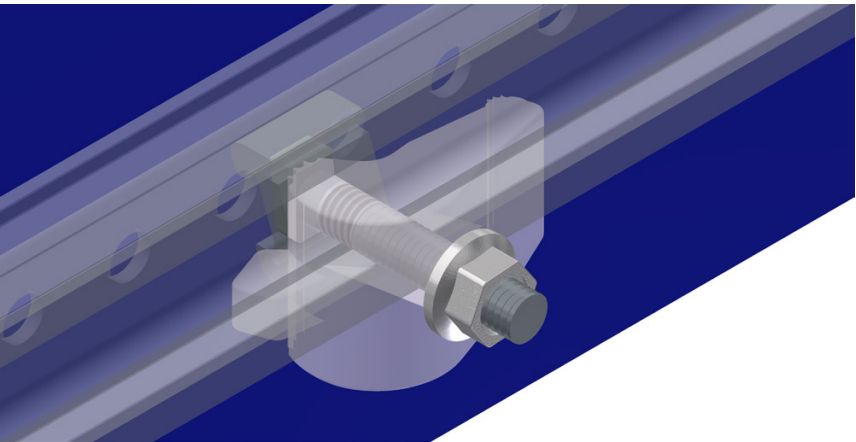


FIG. R3 Round



Beam
Example



Beam Clamp, Quick Lock Bolt Adapter, T-Head Bolt,
Aluminum Sign Brace Example

SECTION - Description	Product Number	Weight Per	Std Package
Kleen Break Model 425 Page 7			
Surface Mount Kleen Break Assembly	XKBSM42520-G	13.0 # each	1 each
Stem Mount Kleen Break Assembly	XKB42520-G	12.6 # each	1 each
½” drive Kleen Break Socket	XKBW-SOCKET	0.88 # each	1 each
⅝” - 11 x 4” Model 425 Shear Bolt hardware	SBH5840-Z	0.55 # each	25 each per box
Rubber Bushing for Kleen Break	RB30-EPDM	0.20 # each	10 each per box
Post to Coupler Locking Wedge	LWX35F-G	0.44 # each	10 each per box
2” Square Post Receiver	TX175-200-G	4.64 # each	5 each per box
Kleen Break Surface Mount Base	SMKB3-G	6.61 # each	5 each per box
Kleen Break Anchor for Concrete or Soil installs	CKBA-8-G	6.24 # each	5 each per box
½” x 4” Threaded Wedge Anchor Bolt	WB50-400-Z	0.28 # each	1 each
½” x 5½” Expansion Anchor	RS50-550-Z	0.30 # each	1 each
Redi-Torque Model 280 Page 9			
8” Cast Redi-Torque Slip Base 2½” SQ - 36” concrete	RT8UX-25C36C-G	38.56 # each	1 each
8” Cast Redi-Torque Slip Base for 2½” SQ - 36” soil	RT8UX-25C36W-G	53.45 # each	1 each
8” Cast Redi-Torque Slip Base 2½” SQ - 42” concrete	RT8UX-25C42C-G	42.24 # each	1 each
8” Cast Redi-Torque Slip Base for 2½” SQ - 42” soil	RT8UX-25C42WC-G	57.13 # each	1 each
8” Cast Redi-Torque Slip Base 2½” SQ - 48” concrete	RT8UX-25C48C-G	50.17 # each	1 each
8” Cast Redi-Torque Slip Base for 2½” SQ - 48” soil	RT8UX-25C48WC-G	60.81 # each	1 each
8” Cast Redi-Torque Slip Base 2½” SQ - surface mnt.	RT8SMX-25C-G	38.13 # each	1 each
8” Cast Redi-Torque Slip Base 2½” SQ - surf. & hdwr.	RT8X-25C10SM-GHW	40.53 # each	1 each
10” Cast Redi-Torque Slip Base 2½” SQ - 36” concrt.	RT10UX-25C36C-G	40.81 # each	1 each
10” Cast Redi-Torque Slip Base for 2½” SQ - 36” soil	RT10UX-25C36W-G	55.70 # each	1 each
10” Cast Redi-Torque Slip Base 2⅞” RD - 36” concrt.	RT10UX-278C36C-G	41.56 # each	1 each
10” Cast Redi-Torque Slip Base 2⅞” RD - surf. & hdwr.	RT10X-25C10SM-GHW	44.38 # each	1 each
8” Cast Redi-Torque Slip Base Top for 2½” Square	SB8C-250A-G	10.25 # each	1 each
10” Cast Redi-Torque Slip Base Top for 2½” Square	SB10C-250A-G	12.5 # each	1 each
10” Cast Redi-Torque Slip Base Top for 2⅞” Round	SB10C-278RD-G	13.25 # each	1 each
Post to Receiver Locking Wedge for Square Post	LWX35F-G	0.44 # each	10 each per box
Post to Receiver Locking Wedge for Round Post	LWX278RD-G	0.80 # each	10 each per box
Redi-Torque Match-Plate Hardware - full set	RTSB-MPHDW	1.88 # each	1 each
½” x 3” Redi-Torque Bolt	RTB50-300-G	0.29 # each	1 each
⅝” Flat Washer - galvanized	FW58-G	0.069 # each	1 each
Teflon Coated Slip Washer	TCS175-188	0.119 # each	1 each
½” Large Flange Nut	G8LFN50-G	0.133 # each	1 each
16ga Shim	LS175-06	0.039 # each	1 each
0.032” thick Brass Shim	BS032	0.019 # each	1 each
0.012” thick Brass Shim	BS012	0.007 # each	1 each
8” Redi-Torque Unibase Anchor - 30” concrete	SB8-CTA-30-G	22.75 # each	1 each
8” Redi-Torque Unibase Anchor - 36” concrete	SB8-CTA-36-G	26.43 # each	1 each

CONTINUED

SECTION - Description	Product Number	Weight Per	Std Package
Redi-Torque Model 280 Page 9			
8” Redi-Torque Unibase Anchor - 42” concrete	SB8-CTA-42-G	30.11 # each	1 each
8” Redi-Torque Unibase Anchor - 48” concrete	SB8-CTA-48-G	33.79 # each	1 each
10” Redi-Torque Unibase Anchor - 30” concrete	SB10-CTA-30-G	27.01 # each	1 each
10” Redi-Torque Unibase Anchor - 36” concrete	SB10-CTA-36-G	30.69 # each	1 each
10” Redi-Torque Unibase Anchor - 42” concrete	SB10-CTA-42-G	34.36 # each	1 each
10” Redi-Torque Unibase Anchor - 48” concrete	SB10-CTA-48-G	38.04 # each	1 each
8” Redi-Torque Unibase Anchor - 36” soil	SB8-CTWA-36-G	41.32 # each	1 each
8” Redi-Torque Unibase Anchor - 42” soil	SB8-CTWA-42-G	45.00 # each	1 each
8” Redi-Torque Unibase Anchor - 48” soil	SB8-CTWA-48-G	48.68 # each	1 each
10” Redi-Torque Unibase Anchor - 36” soil	SB10-CTWA-36-G	45.58 # each	1 each
10” Redi-Torque Unibase Anchor - 42” soil	SB10-CTWA-42-G	49.26 # each	1 each
10” Redi-Torque Unibase Anchor - 48” soil	SB10-CTWA-48-G	52.93 # each	1 each
8” Redi-Torque Unibase Anchor - surface mount	SMSB8-10-G	26 # each	1 each
10” Redi-Torque Unibase Anchor - surface mount	SMSB10-10-G	30 # each	1 each
MASSH-400 Page 11			
13” MASSH-400 Slip Base for 4” SQ - 36” concrete	RT13UX-400A36C-G	78 # each	1 each
13” MASSH-400 Slip Base for 4” SQ - 48” concrete	RT13UX-400A48C-G	89 # each	1 each
13” MASSH-400 Slip Base for 4” SQ - 54” concrete	RT13UX-400A54C-G	95 # each	1 each
13” MASSH-400 Slip Base Top for 4” Square	SB13-400SQR-G	25 # each	1 each
13” MASSH-400 Unibase - 36” concrete	SB13-CTA36-G	47 # each	1 each
13” MASSH-400 Unibase - 48” concrete	SB13-CTA48-G	58 # each	1 each
13” MASSH-400 Unibase - 54” concrete	SB13-CTA54-G	64 # each	1 each
13” MASSH-400 Unibase - 96” soil	SB13-CTWA96-G	240 # each	1 each
MASSH-400 Post Attachment Hardware (3)	X4-HDW-1	0.76 # each	1 each
MASSH-400 Match-Plate Hardware - full set	RTSB75-MPHDW	4.2 # each	1 each
MASSH-400 Hinge Assembly	X4-HINGE	23 # each	1 each
MASSH-400 Hinge Repair Kit	X4-HRK	1.6 # each	1 each
MASSH-400 Hinge Replacement Sleeve	X4-HSL-G	4.5 # each	1 each
Universal Post Clamp for 4” SQ for ext. panel signs	UPC400SQ	1.4 # each	1 each
Universal Post Clamp for 4” SQ w/rectangle bolts	UPC400SQRS	1.4 # each	1 each
Universal Post Clamp for 4” SQ for ASB200 bracing	UPC400SQA	1.4 # each	1 each
Post Clamp for ASB200 Brace 4” SQ	SBPCS400SQ	0.76 # each	1 each
Post Clamp for Extruded Panels 4” SQ	EPPCS400SQ	0.51 # each	1 each
MASSH-400 Post Cap	X4SQCC	0.7 # each	1 each

SECTION - Description	Product Number	Weight Per	Std Package
Adjust-A-Sign Page 13			
2" Aluminum Sign Brace	ASB200-xx	0.654 # / foot	12ft & 24ft
2" Aluminum Sign Brace - 3⁄8" perf.	ASB200P1-xx	0.638 # / foot	12ft & 24ft
2" Aluminum Sign Brace - 3⁄16" perf.	ASB200P6-xx	0.65 # / foot	12ft & 24ft
2" Aluminum Sign Brace - 3⁄8" perf.	ASB200PC-xx	0.65 # / foot	Varies
1¼" Aluminum Sign Brace	ASB125-xx	0.45 # / foot	12ft & 24ft
2½" x 3" Aluminum "T" Sign Brace	TSB25X3-xx	1.20 # / foot	12ft & 25ft
Post Clamp for Extruded Panels for 2" SQ	EPPCS200SQ	0.33 # each set	10 sets per box
Post Clamp for Extruded Panels for 2¼" SQ	EPPCS225SQ	0.35 # each set	10 sets per box
Post Clamp for Extruded Panels for 2½" SQ	EPPCS250SQ	0.36 # each set	10 sets per box
Post Clamp for Extruded Panels for 3" SQ	EPPCS300SQ	0.41 # each set	10 sets per box
Post Clamp for Extruded Panels for 4" SQ	EPPCS400SQ	0.55 # each set	10 sets per box
Post Clamp for Extruded Panels for 5" SQ	EPPCS500SQ	0.60 # each set	10 sets per box
Post Clamp for Ext. Panels 2⅜" OD & 2½" OD RD	EPPCS250RD	0.33 # each set	10 sets per box
Post Clamp for Ext. Panels for 3" OD RD	EPPCS300RD	0.37 # each set	10 sets per box
Post Clamp for Ext. Panels for 3½" OD RD	EPPCS350RD	0.41 # each set	10 sets per box
Post Clamp for Ext. Panels 4" OD RD	EPPCS400RD	0.45 # each set	10 sets per box
Post Clamp for Ext. Panels for 4½" OD RD	EPPCS450RD	0.49 # each set	10 sets per box
Post Clamp for Ext. Panels 5" OD RD	EPPCS500RD	0.53 # each set	10 sets per box
Post Clamp for Ext. Panels for 6" OD RD	EPPCS600RD	0.57 # each set	10 sets per box
Post Clamp for ASB200 Brace 2" SQ	SBPCS200SQ	0.53 # each set	10 sets per box
Post Clamp for ASB200 2¼" SQ	SBPCS225SQ	0.54 # each set	10 sets per box
Post Clamp for ASB200 2½" SQ	SBPCS250SQ	0.55 # each set	10 sets per box
Post Clamp for ASB200 Brace 3" SQ	SBPCS300SQ	0.63 # each set	10 sets per box
Post Clamp for ASB200 Brace 4" SQ	SBPCS400SQ	0.76 # each set	10 sets per box
Post Clamp for ASB200 2⅜" OD & 2½" OD RD	SBPCS250RD	0.49 # each set	10 sets per box
Post Clamp for ASB200 3" OD RD	SBPCS300RD	0.57 # each set	10 sets per box
Post Clamp for ASB200 3½" OD RD	SBPCS350RD	0.65 # each set	10 sets per box
Post Clamp for ASB200 4" OD RD	SBPCS400RD	0.69 # each set	10 sets per box
Post Clamp for ASB200 4½" OD RD	SBPCS450RD	0.75 # each set	10 sets per box
Universal Post Clamp for 2½" SQ - aluminum	UPCA250	0.15 # each	10 each per box
Universal Post Clamp for 4" SQ - stainless steel	UPC400SQ	1.4 # each	1 each
Quick Lock Bolt Adapter for ASB200 series	QLBAA38	0.0003 # each	100 per box
Self-Drilling Tapping Screw for flat sign panels	ST1050-Z	0.006 # each	100 per box
3⁄16" Sign Drive Rivet & washer	SPDRA-316	0.003 # each	100 per box
3⁄8" Sign Drive Rivet with pre-attached washer	DRAS3878-06-W	0.024 # each	100 per box
Die-Cast Aluminum Beam Clamp	BCA38	0.12 # each	25 each per box
Sand-Cast Aluminum Beam Clamp	BCSC38	0.11 # each	25 each per box

CONTINUED

SECTION - Description	Product Number	Weight Per	Std Package
Adjust-A-Sign Page 13			
3⁄8" x 2" Aluminum Twist Lock T-Head Bolt	THBA38-200	0.02 # each	100 per box
3⁄8" x 2" Stainless Steel Twist Lock T-Head Bolt	THBS38-200	0.06 # each	100 per box
3⁄8" x 3" Stainless Steel Twist Lock T-Head Bolt	THBS38-300	0.09 # each	100 per box
3⁄8" Case-Hardened Flange Nut	CHFN38-Z	0.02 # each	100 per box
3⁄8" x 1¼" Aluminum Rectangle Head Bolt	RHBA38-175	0.02 # each	100 per box
3⁄8" x 1¼" Stainless Steel Rectangle Head Bolt	RHBS38-175	0.06 # each	100 per box
3⁄8" Nylon Insert Lock Nut - aluminum	NILNA38	0.01 # each	100 per box
3⁄8" Nylon Insert Lock Nut - stainless steel	NILN-38S	0.02 # each	100 per box
Splice for ASB200 series brace	ASB-SPLC-6	0.25 # each	5 each per box

NOTES