



# X<sup>2</sup>CESSORIES SQUARED

**Development & Manufacturing Inc.**  
Traffic Sign Support Products

**Contact your local Xcessories Squared  
distributor for options, pricing, and availability.**

*Products are Made in the USA.*

DEALER INFORMATION GOES HERE

[www.x-sqrd.com](http://www.x-sqrd.com)



[info@x-sqrd.com](mailto:info@x-sqrd.com)

800-621-7948

X2CATH23

## Sign Mounting, Installation, and Hardware Products

## MASH-COMPLIANT

**Your total sign support product line starts here.**

Fabricated Structures  
Breakaway Bases  
Sign Posts  
Sign Bracing  
Clamps, Brackets, &  
Related Hardware  
Anchor-Driving Equipment

We not only manufacture to state and  
FHWA requirements but are continually  
involved in product design and development  
in conjunction with highway departments'  
needs and requests.

[www.x-sqrd.com](http://www.x-sqrd.com)

Index

Adjust-A-Sign Aluminum Brace System \_\_\_\_\_ 4 - 7

Pole Cat Sign Mounting Bracket System \_\_\_\_\_ 8 - 9

Cantilevered Sign Mounting Bracket System \_\_\_\_\_ 10

Stainless Steel Banding and Brackets \_\_\_\_\_ 11

Round Aluminum Sign Mounting Brackets \_\_\_\_\_ 12

Chevron Brackets \_\_\_\_\_ 13

Barricade Brackets \_\_\_\_\_ 14

PSST Connector Brackets \_\_\_\_\_ 15

Mounting Bases and Heavy-Duty Anchors \_\_\_\_\_ 16

Perforated Square Steel Tube Hardware \_\_\_\_\_ 17

Drive Caps, Shanks, and Adapters \_\_\_\_\_ 18 - 19

Post Caps and Crosses \_\_\_\_\_ 20 - 21

Miscellaneous \_\_\_\_\_ 21

Product Part Numbers \_\_\_\_\_ 22 - 27

Contact Information:

Auburn, IL	PH: 800-621-7948	FAX: 217-438-3917
Goodyear, AZ	PH: 623-882-1153	FAX: 623-882-1174 (CA, NV, UT, AZ, NM)
Technical Assistance:	Matt Leahy _____ mleahy@x-sqrd.com	Greg Kirchgesner _____ gkirchgesner@x-sqrd.com
Customer Service:	Traci Beck _____ tbeck@x-sqrd.com	Tracy Audi _____ taudi@x-sqrd.com
Internal Sales:	Andrew Reinert _____ areinert@x-sqrd.com	
Shipping Department:	Brian Leanard _____ bleanard@x-sqrd.com	

info@x-sqrd.com

www.x-sqrd.com

About Us

Larry Leahy started Xcessories Squared in 1988, and he has been in the traffic/sign support industry for nearly 50 years. Our team boasts more than 150 years of combined experience in product development, technical knowledge, and sales.

We manufacture to ASSHTO and FHWA requirements and are continually involved in product design and development in conjunction with transportation departments' needs and requests. Xcessories Squared fabricates many sign structures for states per their standards, so we can work directly with transportation departments for total documentation and specification support.

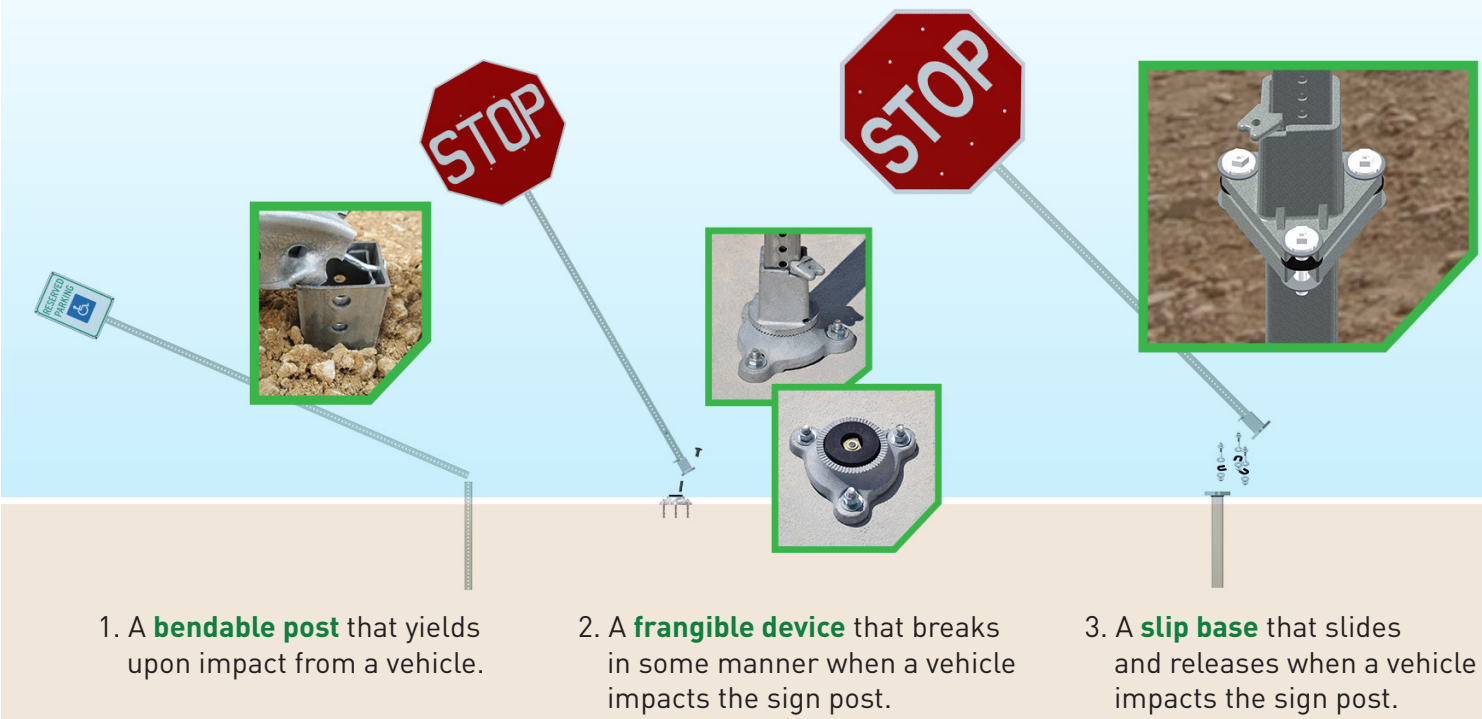
In addition, we've been involved with Task Force 13 for 25 years and with AFB Technical Committee on Roadside Safety. We have also run numerous tests in accordance with MASH-16 criteria.

When you work with Xcessories Squared, you'll see that solving problems with innovative designs is one of our most important strengths. From slip base to break-away bases, sign posts, sign bracing, and all clamps, brackets, and related hardware, your total sign support product line starts here.

Xcessories Squared  
Products are  
**PROUDLY MADE,  
MELTED, AND  
MANUFACTURED  
IN THE USA!**

NOTE: MASH requires any new sign installation must have been successfully tested at 0° and at 90° to be used at an intersecting road.

Sign post systems are placed into  
three categories as shown:





# Adjust-A-Sign Bracing and Brackets for Ground-Mounted Sign Support Systems

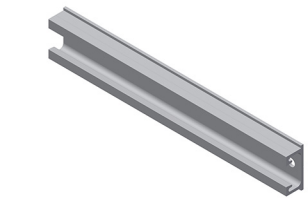
## MASH-16 COMPLIANT

Xcessories Squared manufactures several MASH-16-compliant aluminum sign braces that provide additional support to the flat sign panels. Additionally we manufacture several brackets that fit standard extruded panel signs as well as all of our aluminum sign braces. Each sign bracket can hold up to 10ft<sup>2</sup> of sign area. All of our brackets are designed to be easily installed directly into the sign brace channels or extruded panel channels. Xcessories Squared provides several types of sign drive rivets; many are available in common sign panel colors.



Sign Width (ft.)	Maximum Vertical Spacing of Aluminum Bracing					
	1 POST (50-50%)		2 POSTS (20-60-20%)		3 POSTS (15-35-35-15%)	
	Left	Right	Outer	Inner	Outer	Inner
4'	12"	36"				
6'	12"	36"	12"	36"		
8'			12"	36"	12"	36"
10'			12"	36"	12"	36"
12'			12"	28"	12"	36"
14'			10"	20"	12"	36"
16'			7"	15"	12"	36"

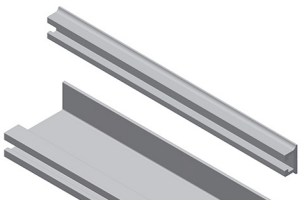
**NOTE:** Aluminum Sign Braces have standard lengths of 12' and 24'.



ASB200  
ASB200P1  
ASB200P6

2" Aluminum Sign Brace - Plain  
2" Aluminum Sign Brace - 3/8" Holes at 1" Spacing  
2" Aluminum Sign Brace - 3/16" Holes at 6" Spacing

Sign Braces



ASB125

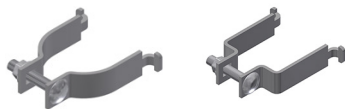
1 1/4" Aluminum Sign Brace - Extruded Panel Channel



TSB25X3

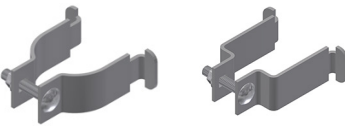
Aluminum T-Sign Brace with Channel - 2 1/2" x 3"

ASB200 series works with SBPCS series.  
ASB125, and TSB25X3 work with EPPCS series.



EPPCS

Extruded Panel Post Clamp Set - Stainless Steel (available for 2", 2 1/4", 2 1/2", 3", 4", & 5" square posts and for 2 3/8", 2 7/8", 3 1/2", 4", 4 1/2", 5", & 6" OD round posts)



SBPCS

Sign Brace Post Clamp Set - Stainless Steel (available for 2", 2 1/4", 2 1/2", 3", & 4" square posts and for 2 3/8", 2 7/8", 3 1/2", 4", & 4 1/2" OD round posts)



UPCA250

Universal Post Clamp - Aluminum for 2 1/2" Square Post



UPC400

Universal Post Clamp - Stainless Steel for 4" Square Post

Post Clamp Sets



QLBAA

Quick Lock Bolt Adapter - Aluminum for ASB200



ST1050

Self-Drilling Tapping Hex Head Screw



SPDRA316

3/16" Aluminum Drive Rivet



DRAS3878

3/8" Aluminum Drive Rivet with Attached Nylon Washer



BC\_38

Die-Cast or Sand-Cast Aluminum "J-Type" Clamp



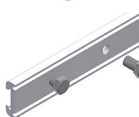
THB\_38  
&  
CHFN38

T-Head Bolt 3/8" x 2" (or 3") - SST or Aluminum  
Case-Hardened Flange Nut 3/8" - Zinc Plated



RHB\_38

Rectangle Head Bolt 3/8" x 1 3/4" - SST or Aluminum



ASB-SPLC

6" Aluminum Splice for Use with ASB200 Series Brace

MISC.



# Adjust-A-Sign Bracing and Brackets for Ground-Mounted Sign Support Systems



(SBPCS) Square Post Sign Brace Post Clamp Sign Bracket installation is simple.

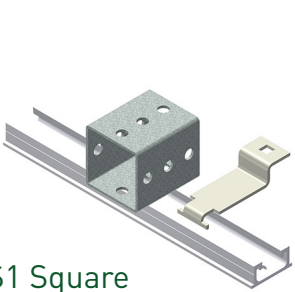


FIG. S1 Square

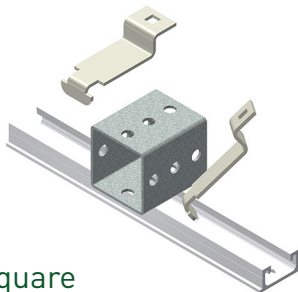


FIG. S2 Square

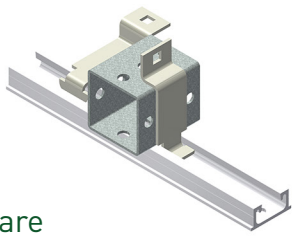


FIG. S3 Square

(EPPCS) Round Post Extruded Panel Post Clamp Sign Bracket installation is simple.

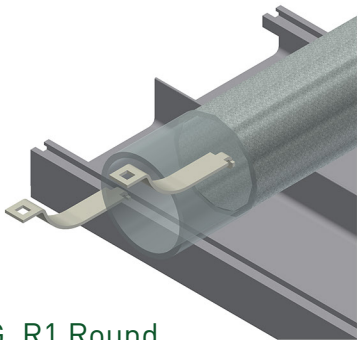


FIG. R1 Round

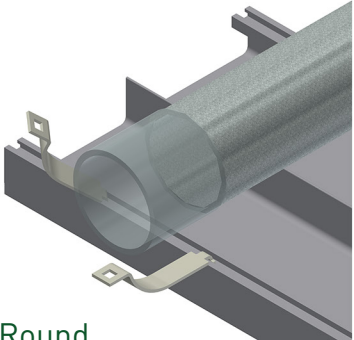


FIG. R2 Round

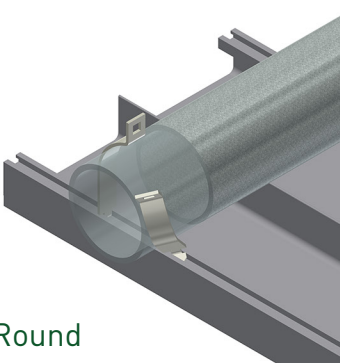
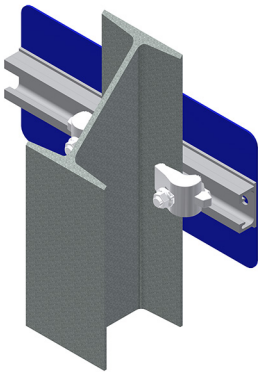
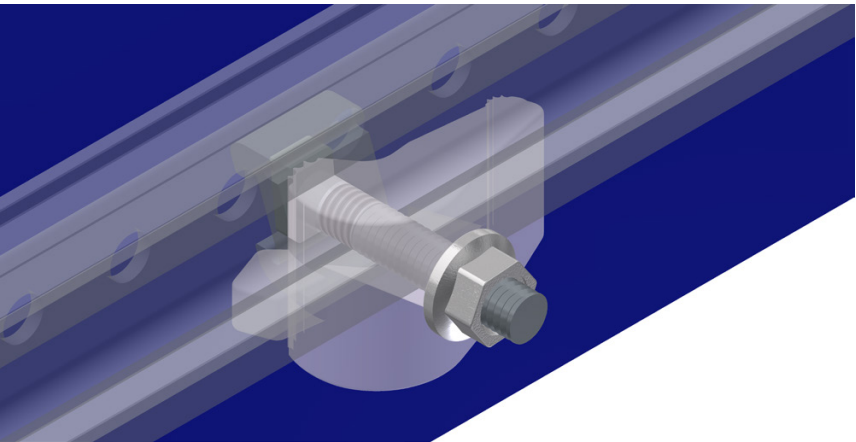


FIG. R3 Round



Beam  
Example



Beam Clamp, Quick Lock Bolt Adapter, T-Head Bolt,  
Aluminum Sign Brace Example



## Pole Cat Sign Mounting Bracket (for Mast Arm & Vertical Poles)

to hold flat panel or extruded panel signs (up to 54ft<sup>2</sup>)

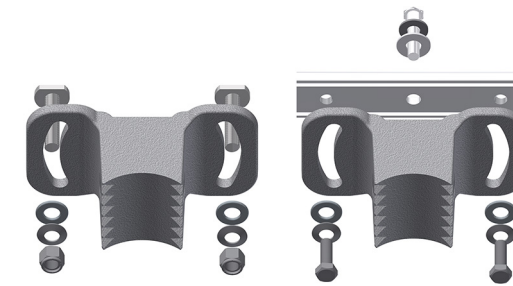
Xcessories Squared manufactures a Mast Arm and Luminaire Sign Mounting Bracket System - the Pole Cat. The Pole Cat can work on horizontal as well as vertical poles with round or flat sides. The bracket is adjustable up to 25' to correct for inclined mast arms. The bracket attaches to the pole with a  $\frac{3}{16}$ " stainless steel cable. The system is capable of holding from 1ft<sup>2</sup> to nearly 50ft<sup>2</sup> of sign area. It works with extruded panel signs as well as flat panel signs.



ASB200

Aluminum Sign Brace P1 with  $\frac{3}{8}$ " holes at 1" intervals for flat panel signs.

Aluminum Sign Brace PC with  $\frac{3}{8}$ " holes spaced to fit extruded panel signs.



**X2PC30**

Pole Cat Bracket Assembly  
Pole Cat Bracket kit with ASB200P1  
Pole Cat Bracket kit for extruded panels



SCL316

$\frac{3}{16}$ " cable assembly in many lengths



XPC30-ST

### Ball Stop Swaging Tool



SCL316-CT

## Stainless Cable Cutting Tool

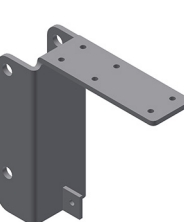
### Quantity Selection Table

Sign height in feet	10'	3	3	4	5	6							
	9'	3	3	3	4	5	6						
	8'	3	3	3	4	5	6						
	7'	3	3	3	4	4	5	6					
	6'	2	2	2	3	4	4	5	6	6			
	5'	2	2	2	2	3	4	4	5	6	6		
	4'	2	2	2	2	2	3	4	4	4	5	5	6
	3'	1	1	1	2	2	2	3	3	3	4	4	4
	2'	1	1	1	2	2	2	3	3	3	3	4	4
	1'	1	1	1	2	2	2	3	3	3	3	4	4
	1'	2'	3'	4'	5'	6'	7'	8'	9'	10'	11'	12'	
Sign width in feet													

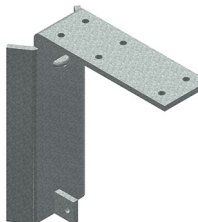
# Cantilevered Saddle Brackets and Hardware

Brackets and Assemblies for Square, Round, & Multisided Posts

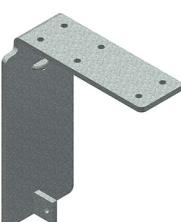
Xcessories Squared manufactures sign mounting brackets that allow a double-sided flat or extruded sign panel to mount off the side of virtually any shape of post or pole. The signs can be just about any length. The assemblies can be powder coated to most colors. The assemblies can also be purchased as components, pre-drilled, or pre-assembled.



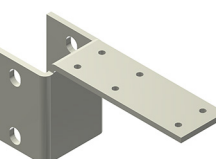
**CSB-SQL**  
Long bracket for 2" PSST post



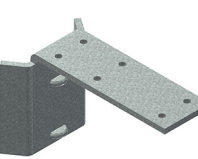
**CSB-RDL**  
Long bracket for 4½" or larger round post



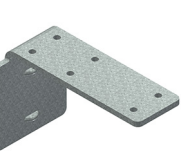
**CSB-HXL**  
Long bracket for flat sided post



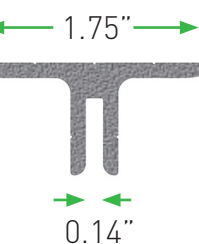
**CSB-SQS**  
Short bracket for 2" PSST post



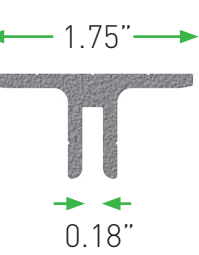
**CSB-RDS**  
Short bracket for 4½" or larger round post



**CSB-HXS**  
Short bracket for flat sided post



**XAT175**  
Double Leg "T" Aluminum Extrusion - fits to 0.10"




**WXAT175**  
Wide Double Leg "T" Aluminum Extrusion - fits to 0.125"



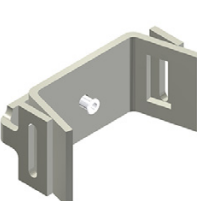
# Stainless Steel Banding and Brackets

Assemblies, Kits, & Components used for ¾" x .030" Thick Stainless Steel Banding

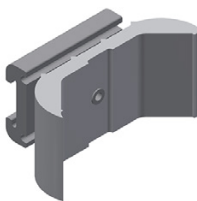
Xcessories Squared manufactures and provides several options for attaching sign panels to posts using inexpensive stainless steel banding. We provide only the strongest ¾" wide by .030" thick stainless steel banding. We also have several options for tightening the banding. Our EPC450RD brackets work with extruded sign panels and our SBC450RD work with our 2" aluminum sign brace to accommodate flat panel signs.




**LBBS38A**  
SST "L" shaped banding brkt. assy. w/hardware




**EPC450RD**  
Extruded Panel Clamp for 4½" & larger rounds




**SBC450RD**  
Sign Brace Clamp for 4½" & larger rounds



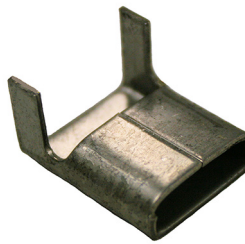
**XST000**  
Straight leg bracket with bolt and washer




**XST021**  
Flared leg bracket with bolt and washer




**XST256**  
¾" banding buckle



**XST156**  
¾" banding wing seal



**XST001**  
Spin tight tensioning tool for up to ¾" x .030" banding



**SSB75-30**  
¾" x .030" stainless steel banding - 100' rolls

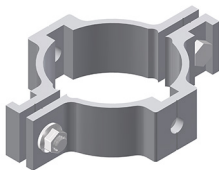


# Aluminum Sign Mounting Brackets

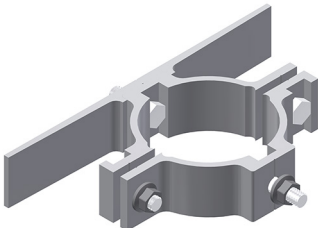
Complete Assemblies for Round Posts



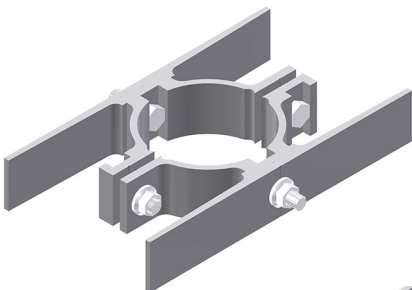
Xcessories Squared manufactures and provides a line of aluminum sign post clamps for round pipe posts. We also have a sign backer bar that can attach to them to provide additional support. We offer a U-bolt sign clamp assembly for round posts available for 2 3/8" and for 2 7/8" OD round posts.



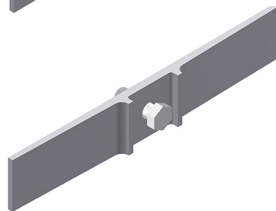
**XAPC**  
Aluminum clamp set for 2 3/8", 2 7/8", 3 1/2", & 4 1/2" OD round posts



**XAPC1**  
Aluminum clamp set with 1 XAB750



**XAPC2**  
Aluminum clamp set with 2 XAB750



**XAB750**  
Sign Backer Bar set for XAPC series clamp

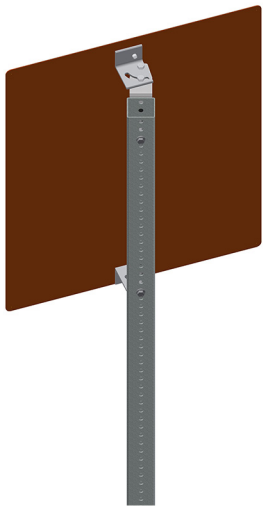


**UBC1**  
U-bolt clamp set for 2 3/8" & 2 7/8" OD round posts

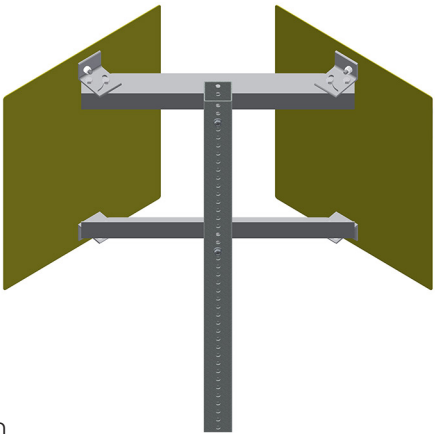
# Aluminum Chevron Brackets

Fits 18", 24", 30", & 36" Wide Signs and Any Height of Sign Assemblies for Mounting onto PSST Posts

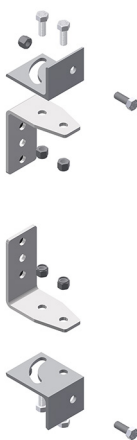
Xcessories Squared manufactures Chevron Brackets to fit several Chevron Sign sizes. We have a single-mount kit as well as three sizes of two-sign mount kits. The kits come with all of the material you need to assemble and mount the sign panel. You will only need the hardware to secure the brackets to the sign post as that is dependent on the size of the post. The sign panels can be adjusted to your preferred orientation angle and tightened. The kits work with virtually any width or height of sign panel.



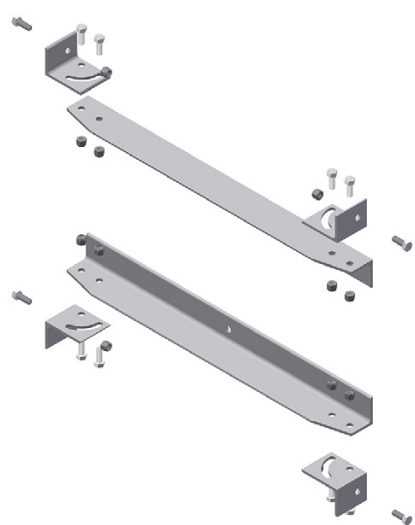
**ACB-S**  
Adjustable Chevron Bracket for single-sign panel



**ACB-D**  
Adjustable Chevron Bracket for two-sign panels



**ACB-1**  
Adjustable Chevron Bracket kit fits any width or height

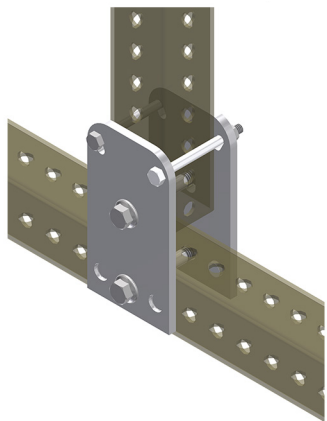
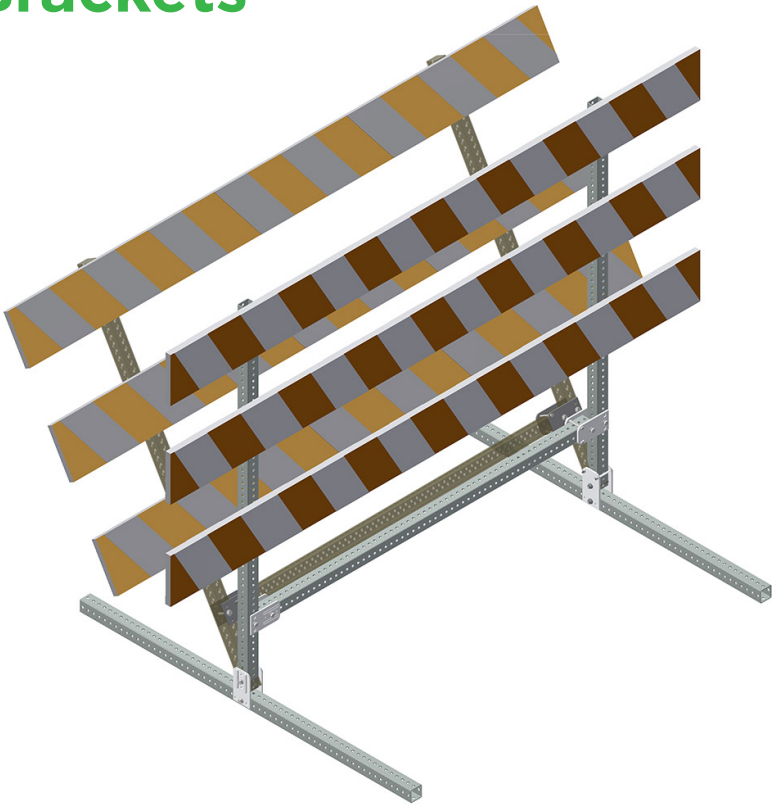


**ACB--**  
Adjustable Chevron Bracket kit available in 18", 24", 30", & 36" width options

# Type III Barricade Brackets

For All Sizes of PSST Posts

Xcessories Squared manufactures two designs of Type III barricade brackets. Our TL132/133 design uses a shear bolt to hold the support post upright, which breaks if the barricade is impacted by a vehicle. The shear bolts as well as the plates are available separately. Our TBB3 design contains built-in features that hold the support post upright but allow it to push over if impacted by a vehicle. It also more easily allows collapsing of the assemblies to facilitate easier transport to the next work site. This assembly is also available as a kit or as components to allow its maintenance.



TL132  
TL133

Shear Pin Barricade Plate - fits 1 3/4" & 2" PSST  
Shear Pin Barricade Assembly - fits 1 3/4" & 2" PSST



TBB3  
TBB3A

Collapsible Barricade Plate - fits all PSST  
Collapsible Barricade Assembly - fits all PSST

HHSB25  
G8FB38

1/4" x 3" Hex Head Shear Bolt w/nut (for TL132/133)  
3/8" x 3" Gr. 8 Flange Bolt w/nut

# PSST Connector Brackets

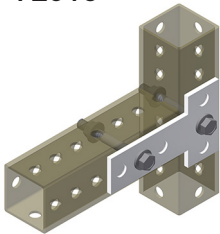
Fits Most Sizes of Perforated Square Steel Tubes

Xcessories Squared manufactures brackets for connecting various configurations of PSST (perforated square steel tube) together. The pictures provide you with the various applications. The brackets are stronger than the tubes they hold. The hardware for them is sold separately since they work with a variety of tube gauges and diameters.

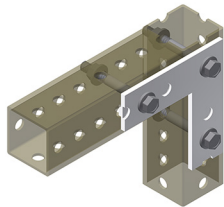
Tube Size	Cutting Dimensions
1 1/2" sq.	1 3/16"
1 3/4" sq.	1 1/16"
2" sq.	1 5/16"
2 1/4" sq.	1 3/16"
2 1/2" sq.	1 1/16"

**NOTE:** Cutting dimensions are from end of tube to first hole.

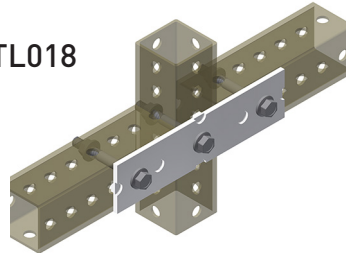
TL015



TL016

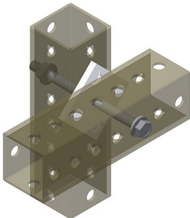


TL018



Tube Size
1 1/2" sq.
1 3/4" sq.
2" sq.
2 1/4" sq.
2 1/2" sq.

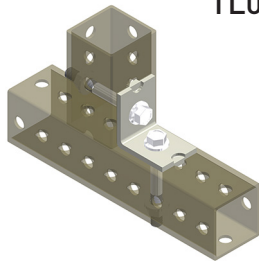
TL017



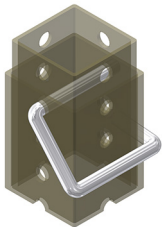
TL019



TL020



TL09\_

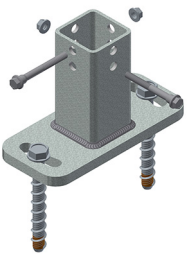




# Mounting Bases and Heavy-Duty Anchors

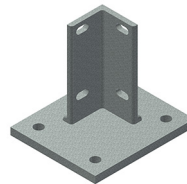
## Bases for Square Posts

Every sign post has to hold onto something. And Xcessories Squared manufactures many options for the various locations and environments they need to be placed. For concrete barriers we have an Indexable Concrete Barrier Mount that was engineered to hold the sign area allowed by the sign post itself, while also holding it in place. It comes with all required hardware to install it to the barrier and the post. We also have a Flat Concrete Barrier bracket to hold various sizes of square posts and a Concrete Barrier Mount that is designed to anchor to the top and the side of the barrier. The Cast-Iron Pedestal Base can hold square sign posts in non-breakaway locations. For various soil applications, we have a Tubular-Winged Anchor, a Quick-Drive Anchor, and a Heavy-Duty Anchor to hold square sign posts.



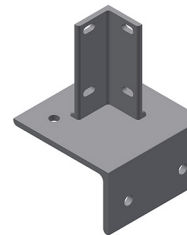
**ICBM**

Indexable Concrete Barrier Mount for 2" & 2½" PSST posts and for 4" square posts



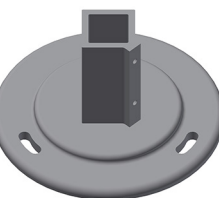
**FCB**

Flat Concrete Base for 1¾" - 2½" PSST posts



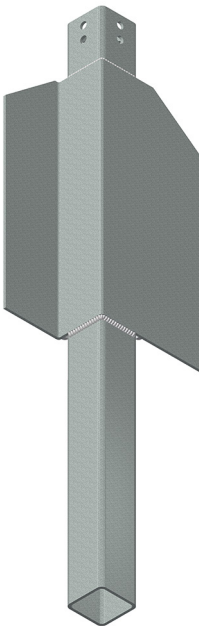
**CBM**

Concrete Barrier Mount Bracket for 1¾" - 2½" PSST posts



**PB200**

Cast-Iron Pedestal Base for 2" PSST posts



**TWA**

Tubular-Winged Anchor for 2" & 2½" PSST posts



**QDA**

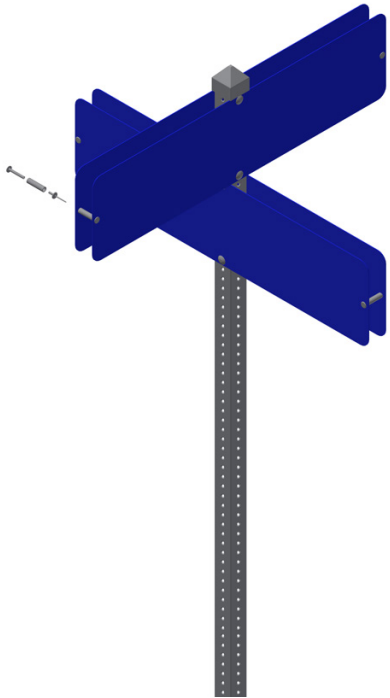
Quick-Drive Anchor for 2" & 2½" PSST posts



**HDA**

Heavy-Duty Anchor for 2" & 2½" PSST posts

# PSST Hardware



Signs, sign posts, and mounting bases all need to secure to something, and Xcessories Squared has the hardware to do that. To secure a sign post to an anchor, we offer several sizes of corner bolts and nuts. When securing a square post to a heavy wall anchor, you need a flanged shoulder bolt and nut. Our Drive Rivet is available with a pre-attached nylon washer to make sure it is in place to help protect the sign panel. We have 3/8" Drive Rivets as well as 3/16" ones; both are available in standard sign panel colors. One of the strongest sign panel mounting systems is a 4-blade sign system. For that we have Sign Mate Rivets in several sizes. We also carry Aluminum Pop Rivets for attaching a sign panel to a cantilever sign bracket. In addition, we have several options for securing a sign base to a concrete surface.



**CB516**

5/16" Corner Bolt (small ≥ 2", medium ≥ 2½", & large ≥ 3")



**FN516**

5/16" Flange Nut



**G8FSB38**

3/8" x 3½" Flanged Shoulder Bolt



**CHFN38**

3/8" Hex Nut



**ST10**

Self-Drilling/Tapping Hex Head Screw



**SMRA/PVCSP**

¼" Aluminum Sign Mate Rivet & spacer - sizes to fit each size PSST post



**SPDRA316**

3/16" Aluminum Sign Rivet - available in most sign colors



**NW38**

3/8" Nylon Washer



**DRAS3878**

3/8" Aluminum shell/steel pin Drive Rivet with & without washer



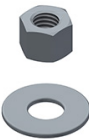
**PRA**

3/16" Aluminum Pop Rivet - available in most sign colors



**WBZ**

Threaded Concrete Wedge Bolt - zinc plated (½" x 4" & 5/8" x 6")

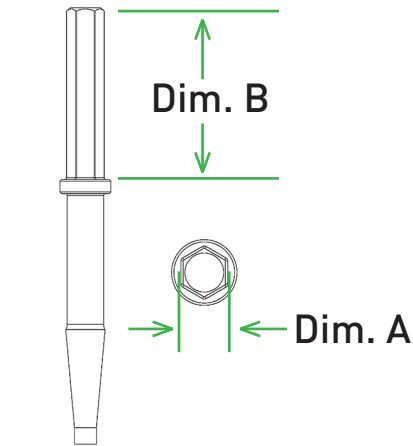


**RS50**

½" Expansion Anchor - zinc plated (2¾", 4½", 5½", & 8½")  
5/8" Expansion Anchor - zinc plated (6")

# Drive Caps, Drive Shanks, Lock & Release Drive Caps, and Manual Drive Caps

Xcessories Squared manufactures a full line of post anchor driving caps for square, round, as well as u-channel posts. The drive caps are made in a manual drive design as well as a lock & release design. The lock & release drive caps fit onto lock & release drive shanks and adapters. The drive shanks have a hex end to fit various drive hammers (power post drivers). The tools are forged, machined, and heat treated for perfect fit, minimal anchor deformation, and increased strength and longevity.



**DCM**  
Manual Drive Cap for various square or round posts

**DCLR**  
Lock & Release Drive Cap for various square or round posts

**UCDC**  
U-Channel Drive Cap - manual or lock & release

**DSLRL**  
Lock & Release Drive Shank - various hex shapes available

**ADPTSQ**  
Lock & Release Drive Adapter for various Stanley and Fairmont Drivers - square and universal chucks

**ADPTRD**  
Lock & Release Drive Adapter for various Stanley, Fairmont, and Rhino Drivers - round chucks

# Detachable Shanks

Xcessories Squared provides a full line of detachable chisels, cutters, and drills for site preparation and completion work to finish your sign post installations. The tools are forged, machined, and heat treated for increased strength and longevity.

**NOTE:** Additional lengths available upon request.

**A1014**  
Std. Moil Point for 7/8" x 4 1/4" & 1 1/4" x 6" hex - 14" length

**A2014**  
Narrow 1" Chisel for 7/8" x 4 1/4" & 1 1/4" x 6" hex - 14" length

**A3014**  
Wide 2 1/2" Chisel for 7/8" x 4 1/4" & 1 1/4" x 6" hex - 14" length

**B18D**  
Drilling Unit with Steel or Rok Bit (3" or 4")

**B916**  
8" Square Tamping Pad for 7/8" x 4 1/4" & 1 1/4" x 6" hex

**B0500**  
5" x 6" Asphalt Cutter for 7/8" x 4 1/4" & 1 1/4" x 6" hex - 11" length



# Aluminum Caps and Crosses

## For All Types of Posts

Xcessories Squared provides aluminum sign holding bracket caps and crosses for both flat aluminum sign panels as well as extruded sign panels. We have them to fit onto several post sizes of square, round, and u-channel. We also manufacture inexpensive flat caps that stack/store well and install easily. Economy caps are also available.



**850 Series**

5 1/4" Long Bracket - extruded, flat, SQ & UC post options



**812 Series**

12" Long Bracket - extruded, flat for 2" square posts



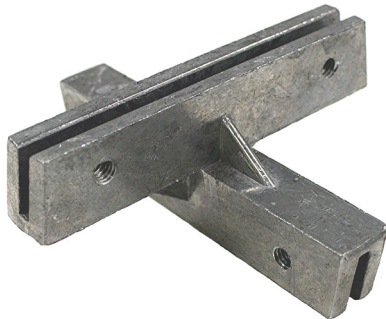
**808 Series**

2 3/8" Round Bracket - extruded & flat options



**812 Series**

12" Long Bracket - extruded, flat for 2 3/8" round posts



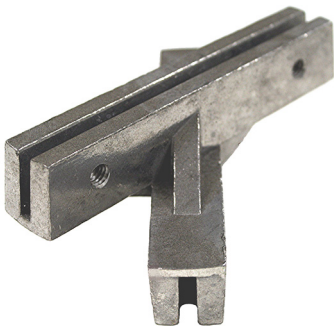
**850\_90X**

90° Cross Bracket - extruded & flat, 5 1/4" options



**812\_90X**

12" Long Bracket - extruded & flat options



**850\_45X**

45° Cross Bracket - extruded & flat 5 1/4" options



**812\_45X**

12" Long Bracket - extruded & flat options

# Aluminum Caps and Galvanized Steel Caps

We also have many sizes of galvanized steel post caps for round and square posts.



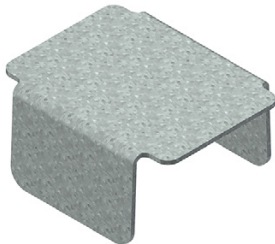
**ARC Series**

Aluminum Pyramid Rain Cap - 1 3/4" & 2" SQ options



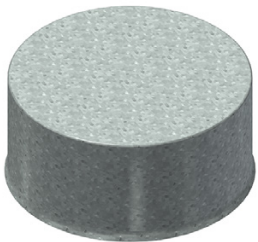
**850CC Series**

Aluminum Dome Cap - 2" & 2 1/2" square options



**SQCC Series**

Galvanized Steel Post Cap - 2 1/2" & 4" square options

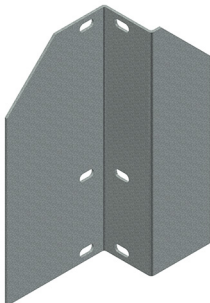


**CC Series**

Galvanized Steel Closure Cap for 2", 2 3/8", 2 7/8", 3 1/2", 4 1/2", & 5 1/2" ODs

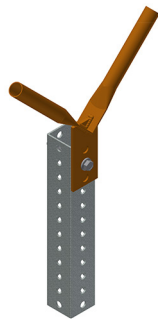
## Miscellaneous

Xcessories Squared manufactures several miscellaneous accessory products used with or to help with installation or function of some of the Xcessories Squared products. These include a soil stabilizer that can assist a perforated square steel tube anchor in soil to resist wind against the sign panel, a flag mount bracket for flash flood or similar emergency incidents, and we also have a Light Duty Wedge Puller to pull anchors out of soft soil and locking wedges out of post receivers.



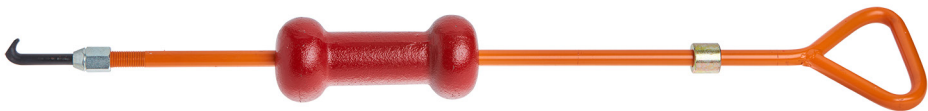
**SS10**

Bolt on Soil Stabilizer fits 1 3/4" - 2 1/2" PSST



**FM90**

Flag Mount Bracket for 3/4" Dowels



**LDWP**

Light Duty Wedge Puller

SECTION - Description	Product Number	Weight Per	Std Package
Adjust-A-Sign Page 5			
2" Aluminum Sign Brace	ASB200-xx	0.654 # / foot	12ft & 24ft
2" Aluminum Sign Brace - 3/8" perf.	ASB200P1-xx	0.638 # / foot	12ft & 24ft
2" Aluminum Sign Brace - 3/16" perf.	ASB200P6-xx	0.65 # / foot	12ft & 24ft
2" Aluminum Sign Brace - 3/8" perf.	ASB200PC-xx	0.65 # / foot	Varies
1 1/4" Aluminum Sign Brace	ASB125-xx	0.45 # / foot	12ft & 24ft
2 1/2" x 3" Aluminum "T" Sign Brace	TSB25X3-xx	1.20 # / foot	12ft & 25ft
Post Clamp for Extruded Panels 2" SQ to 5" SQ	EPPCS__SQ	0.33 # - 0.60 # each	10 each per box
Post Clamp for Ext. Panels 2 3/8" OD RD to 6" OD RD	EPPCS__RD	0.33 # - 0.57 # each	10 each per box
Post Clamp for ASB200 Brace 2" SQ to 4" SQ	SBPCS__SQ	0.53 # - 0.76 # each	10 each per box
Post Clamp for ASB200 2 3/8" OD RD to 4 1/2" OD RD	SBPCS__RD	0.49 # - 0.75 # each	10 each per box
Universal Post Clamp for 2 1/2" SQ	UPCA250	0.15 # each	10 each per box
Universal Post Clamp for 4" SQ	UPC400SQ	1.4 # each	1 each
Quick Lock Bolt Adapter for ASB200 series	QLBAA38	0.0003 # each	100 each per box
Self-Drilling Tapping Screw for flat sign panels	ST1050-Z	0.006 # each	100 each per box
3/16" Sign Drive Rivet & washer	SPDRA-316	0.003 # each	100 each per box
3/8" Sign Drive Rivet with pre-attached washer	DRAS3878-06-W	0.024 # each	100 each per box
Die-Cast Aluminum Beam Clamp	BCA38	0.12 # each	25 each per box
Sand-Cast Aluminum Beam Clamp	BCSC38	0.11 # each	25 each per box
3/8" x 2" Aluminum Twist Lock T-Head Bolt	THBA38-200	0.02 # each	100 each per box
3/8" x 2" Stainless Steel Twist Lock T-Head Bolt	THBS38-200	0.06 # each	100 each per box
3/8" x 3" Stainless Steel Twist Lock T-Head Bolt	THBS38-300	0.09 # each	100 each per box
3/8" Case-Hardened Flange Nut	CHFN38-Z	0.02 # each	100 each per box
3/8" x 1 3/4" Aluminum Rectangle Head Bolt	RHBA38-175	0.02 # each	100 each per box
3/8" x 1 3/4" Stainless Steel Rectangle Head Bolt	RHBS38-175	0.06 # each	100 each per box
3/8" Nylon Insert Lock Nut - aluminum	NILNA38	0.01 # each	100 each per box
3/8" Nylon Insert Lock Nut - stainless steel	NILN-38S	0.02 # each	100 each per box
Splice for ASB200 series brace	ASB-SPLC-6	0.25 # each	5 each per box
Pole Cat Page 9			
Pole Cat Bracket	X2PC30	1.40 # each	1 each
Pole Cat Bracket with ASB (12" to 78") flat panels	X2PC30-12	2.04 # - 7.56 # each	1 each
Pole Cat Bracket for extruded panels - horizontal	X2PC30-EPH	2.0 # each	1 each
Pole Cat Bracket for extruded panels - vertical	X2PC30-EPV	2.0 # each	1 each
Pole Cat Cable (24" to 168")	SCL316-xxxx	0.22 # - 1.09 # each	1 each
Pole Cat Ball Stop Swaging Tool	XPC30-ST	3.0 # each	1 each
Stainless Steel Cutting Tool	SCL316-CT	3.0 # each	1 each
2" Aluminum Sign Brace - 3/8" perf.	ASB200PC-xx	0.65 # / foot	Varies

SECTION - Description	Product Number	Weight Per	Std Package
Cantilevered Brackets Page 10			
Short Bracket for 2" PSST	CSB200SQS-ZP	1.39 # each	10 each per box
Long Bracket for 2" PSST	CSB200SQL-ZP	2.35 # each	10 each per box
Short Bracket for 4 1/2" or larger Round Posts	CSB450RDS-ZP	1.07 # each	10 each per box
Long Bracket for 4 1/2" or larger Round Posts	CSB450RDL-ZP	1.61 # each	10 each per box
Short Bracket for Flat Sided Posts	CSB275HXS-ZP	0.92 # each	10 each per box
Long Bracket for Flat Sided Posts	CSB275HXL-ZP	1.38 # each	10 each per box
Double Leg "T" aluminum sign bracket - standard	XAT175-xx	0.50 # / foot	12ft & 24ft
Double Leg "T" aluminum sign bracket - wide	WXAT175-xx	0.51 # / foot	12ft & 24ft
3/16" Aluminum Pop Rivet for Saddle Brackets	PRA316-6	0.50 # each	100 each per box
Stainless Banding & Brackets Page 11			
SS "L" Shaped Banding Bracket kit	LBBS38A	2.60 # / box	10 each per box
Extruded Panel Clamp for 4 1/2" or larger RD Posts	EPC450RD	0.26 # each	10 each per box
Sign Brace Clamp for 4 1/2" or larger Round Posts	SBC450RD	0.26 # each	10 each per box
Straight Leg Bracket with bolt and washer	XST000	7.30 # / box	50 each per box
Flared Leg Bracket with bolt and washer	XST021	7.60 # / box	50 each per box
3/4" Banding Buckle	XST256	3.70 # / box	100 each per box
3/4" Banding Wing Seal	XST156	2.10 # / box	100 each per box
Spin Tight Tensioning Tool for 3/4" x 0.030" banding	XST001	4.50 # each	1 each
3/4" x 0.030" Stainless Steel Banding	SSB75-30	7.70 # / roll	1 roll
Aluminum Mounting Brackets Page 12			
Aluminum Clamp Set for 2" pipe (2 3/8" OD)	XAPC238RD	0.43 # each set	25 each set per box
Aluminum Clamp Set for 2 1/2" pipe (2 7/8" OD)	XAPC278RD	0.44 # each set	25 each set per box
Aluminum Clamp Set for 3" pipe (3 1/2" OD)	XAPC350RD	0.48 # each set	25 each set per box
Aluminum Clamp Set for 4" pipe (4 1/2" OD)	XAPC450RD	0.54 # each set	25 each set per box
Sign Backer Bar set for XAPC series clamps	XAB750	0.20 # each	25 each per box
U-bolt Clamp for 2" pipe (2 3/8" OD)	UBC1-238RD	0.45 # each	25 each per box
U-bolt Clamp for 2 1/2" pipe (2 7/8" OD)	UBC1-278RD	0.55 # each	25 each per box



SECTION - Description	Product Number	Weight Per	Std Package
Chevron Brackets Page 13			
Adjustable Chevron Bracket Kit for single sign	ACB1-KIT	2.10 # / set	1 set
Adjustable Chevron Bracket Kit for 2 signs - 24"	ACB-24	1.86 # / set	1 set
Adjustable Chevron Bracket Kit for 2 signs - 30"	ACB-30	2.33 # / set	1 set
Adjustable Chevron Bracket Kit for 2 signs - 36"	ACB-36	2.80 # / set	1 set

Type III Barricade Brackets Page 14			
Shear Pin Barricade Plate to fit 1¾" and 2" PSST	TL132-Z	1.00 # each	20 each per box
Shear Pin Barricade Kit to fit 1¾" and 2" PSST	TL133-Z	2.40 # / set	10 each set per box
Collapsible Barricade Plate - fits all PSST	TBB3-Z	0.90 # each	20 each per box
Collapsible Barricade Kit - fits all PSST	TBB3A-Z	2.25 # / set	10 each set per box
¼" x 3" hex head Shear Bolt w/nut for TL132/3	HHSB25-300N-Z	0.057 # each	100 each per box
⅜" x 3" Gr. 8 Flange Bolt w/nut	G8FB38-30N-Z	0.133 # each	100 each per box

PSST Connector Brackets Page 15			
"T" Fitting Bracket	TL015-Z	0.50 # each	25 each per box
"L" Fitting Bracket	TL016-Z	0.63 # each	25 each per box
Anti-Rotation Bracket	TL017-Z	0.33 # each	25 each per box
Straight Fitting Bracket	TL018-Z	0.84 # each	25 each per box
45 degree Offset Bracket for sign mounting	TL019-Z	0.44 # each	25 each per box
90 degree Bracket for PSST corner junctions	TL020-Z	0.26 # each	25 each per box
⅜" Gravity Lock Pin Through 2" PSST	TL092-Z	0.26 # each	25 each per box
⅜" Gravity Lock Pin Through 2½" PSST	TL094-Z	0.29 # each	25 each per box

Mounting Bases Page 16			
Indexable Concrete Mount for 2", 2½", & 4" SQ	ICBM4510-___-G	12.0 # each	1 each
Flat Concrete Base for Barrier Walls	FCB175-250-G	9.31 # each	1 each
Concrete Barrier Mount Bracket	CBM175-250-G	10.34 # each	1 each
Cast-Iron Pedestal Base for 2" PSST	PB200SQ-G	16.63 # each	1 each
Tubular-Winged Anchor for 2" post (36" to 48")	TWA200-___-G	29 # - 35 # each	1 each
Tubular-Winged Anchor for 2½" post (36" to 48")	TWA250-___-G	35 # - 43 # each	1 each
Quick-Drive Anchor for 2" post x 36"	QDA200-36-G	14.05 # each	1 each
Quick-Drive Anchor for 2½" post x 36"	QDA250-36-G	17.08 # each	1 each
Heavy-Duty Anchor for 2" post (30" to 48")	HDA200-___-G	14 # - 22 # each	1 each
Heavy-Duty Anchor for 2½" post (18" to 48")	HDA250-___-G	10 # - 28 # each	1 each

SECTION - Description	Product Number	Weight Per	Std Package
PSST Hardware Page 17			
⅝" Small Corner Bolt - through 2"	CB516-S-Z	0.044 # each	100, 250, 1000 / box
⅝" Medium Corner Bolt - through 2½"	CB516-M-Z	0.052 # each	100, 250, 1000 / box
⅝" Large Corner Bolt - through 3"	CB516-L-Z	0.061 # each	100, 250, 1000 / box
⅝" Flange Nut	FN516-Z	0.013 # each	100, 250, 1000 / box
⅝" Heavy Hex Jam Nut	JNH516-Z	0.011 # each	100, 250, 1000 / box
⅝" x 3½" Gr. 8 Flanged Shoulder Bolt	G8FSB38-35-Z	0.13 # each	100 each per box
⅜" Case-Hardened Flange Nut	CHFN38-Z	0.002 # each	100 each per box
Self-Drilling Tapping Screw for flat sign panels	ST1050-Z	0.006 # each	100 each per box
¼" Aluminum Sign Mate Rivet #18	SMRA25-18	0.009 # each	100, 250, 1000 / box
¼" Aluminum Sign Mate Rivet #26 for 1½" PSST	SMRA25-26	0.012 # each	100, 250, 1000 / box
¼" Aluminum Sign Mate Rivet #30 for 1¾" PSST	SMRA25-30	0.012 # each	100, 250, 1000 / box
¼" Aluminum Sign Mate Rivet #34 for 2" PSST	SMRA25-34	0.013 # each	100, 250, 1000 / box
½" x 1½" PVC Spacer to fit #30 Sign Mate Rivet	PVCSP150	0.011 # each	100, 250, 1000 / box
½" x 1¾" PVC Spacer to fit #34 Sign Mate Rivet	PVCSP175	0.012 # each	100, 250, 1000 / box
⅝" Sign Drive Rivet & washer	SPDRA-316	0.003 # each	100 each per box
⅝" Nylon Washer	NW38	0.001 # each	100, 250, 1000 / box
⅝" Sign Drive Rivet - aluminum	DRAS3878-06	0.023 # each	100, 250, 1000 / box
⅝" Sign Drive Rivet with pre-attached washer	DRAS3878-06-W	0.024 # each	100, 250, 1000 / box
⅝" Aluminum Pop Rivet for Saddle Brackets	PRA316-6	0.005 # each	100 each per box
½" x 4" Threaded Wedge Anchor Bolt	WB50-400-Z	0.28 # each	1 each
⅝" x 6" Threaded Wedge Anchor Bolt	WB58-600-Z	0.60 # each	1 each
½" x 2¾" Expansion Anchor	RS50-275-Z	0.205 # each	1 each
½" x 4½" Expansion Anchor	RS50-450-Z	0.254 # each	1 each
½" x 5½" Expansion Anchor	RS50-550-Z	0.292 # each	1 each
½" x 8½" Expansion Anchor	RS50-850-Z	0.434 # each	1 each

Drive Caps, Shanks, & Adapters Page 18			
Manual Cap for 1¾" 12ga anchor & 1½" SQ post	DC150175M	4.73 # each	1 each
Manual Cap for 2" 12ga anchor & 1¾" SQ post	DC175200M	5.25 # each	1 each
Manual Cap for 2½" 12ga anchor & 2" SQ post	DC200225M	5.85 # each	1 each
Manual Cap for 2½" 10ga anchor & 2⅝" SQ post	DC219250M	7.38 # each	1 each
Manual Cap for 2½" 12ga anchor & 2¼" SQ post	DC225250M	7.55 # each	1 each
Manual Cap for 3" 7ga anchor & 2½" SQ post	DC250300M	9.00 # each	1 each
Manual Cap for 2½" 14ga anchor & 2⅝" RD post	DC231250M	5.87 # each	1 each
Manual Cap for 2⅝" 10ga anchor & 2⅝" RD post	DC262278M	7.64 # each	1 each
Manual Drive Cap for 2# -4# U-channel	UCDC-24M	10.25 # each	1 each

CONTINUED

SECTION - Description	Product Number	Weight Per	Std Package
Drive Caps, Shanks, & Adapters Page 18			
Lock & Release Drive Cap for 1¾" 12ga SQ anchor	DC150175LR	3.74 # each	1 each
Lock & Release Drive Cap for 2" 12ga SQ anchor	DC175200LR	4.24 # each	1 each
Lock & Release Drive Cap for 2¼" 12ga SQ anchor	DC200225LR	4.86 # each	1 each
Lock & Release Drive Cap for 2½" 10ga SQ anchor	DC219250LR	6.40 # each	1 each
Lock & Release Drive Cap for 2½" 12ga SQ anchor	DC225250LR	6.57 # each	1 each
Lock & Release Drive Cap for 3" 7ga SQ anchor	DC250300LR	8.03 # each	1 each
Lock & Release Drive Cap for 2½" 14ga RD anchor	DC231250LR	4.86 # each	1 each
Lock & Release Drive Cap for 2⅞" 10ga RD anchor	DC262278LR	6.64 # each	1 each
Lock & Release Drive Cap for 2# - 4# U-channel	UCDC-24LR	9.25 # each	1 each
Lock & Release Drive Shank to fit ⅞" x 3¼" hex	DS3875LR	2.70 # each	1 each
Lock & Release Drive Shank to fit ⅞" x 4¼" hex	DS4875LR	2.85 # each	1 each
Lock & Release Drive Shank to fit 1" x 4¼" hex	DS4100LR	3.35 # each	1 each
Lock & Release Drive Shank to fit 1⅞" x 6" hex	DS61125LR	4.75 # each	1 each
Lock & Release Drive Shank to fit 1¼" x 6" hex	DS61250LR	5.60 # each	1 each
Lock & Release Drive Adapter to fit 2⅞" SQ Stanley	SAPD45LR	9.26 # each	1 each
Lock & Release Drive Adapter to fit 4⅞" RD Stanley	SAPD48LR	14.49 # each	1 each
Lock & Release Drive Adapter to fit 3.8" RD Fairmont	FA380LR	13.24 # each	1 each
Lock & Release Drive Adapter to fit 2.8" RD Fairmont	FA280LR	8.75 # each	1 each
Lock & Release Drive Adapter to fit 2" x 4" Rect. Fairmont	FA2040LR	9.00 # each	1 each
Lock & Release Drive Adapter to fit 2.5" x 4" Rect. Fairmont	FA2540LR	9.82 # each	1 each
Lock & Release Drive Adapter to fit 3.57" RD Rhino	RAPD50LR	15.19 # each	1 each
Lock & Release Drive Adapter to fit 3.8" RD Rhino	RAPD55LR	15.55 # each	1 each
Lock & Release Drive Adapter to fit 4.25" RD Rhino	RAPD100LR	16.80 # each	1 each

Detachable Shanks Page 19			
⅞" x 4¼" x 14" Standard Moil Point Shank	A01014	3.50 # each	1 each
⅞" x 4¼" x 14" Narrow 1" Chisel Shank	A02014	3.50 # each	1 each
⅞" x 4¼" x 14" Wide 2½" Chisel Shank	A03014	3.70 # each	1 each
1¼" x 6" x 14" Standard Moil Point Shank	A41014	7.20 # each	1 each
1¼" x 6" x 14" Narrow 1" Chisel Shank	A42014	7.20 # each	1 each
1¼" x 6" x 14" Wide 2½" Chisel Shank	A43014	8.10 # each	1 each
⅞" x 4¼" x 18" Drilling Unit with 3" dia. Steel Bit	SB18D-300	7.00 # each	1 each
⅞" x 4¼" x 18" DU with 3" dia. Carbide Rok Bit	RB18D-300	7.20 # each	1 each
⅞" x 4¼" x 18" Drilling Unit with 4" dia. Steel Bit	SB18D-400	8.00 # each	1 each
⅞" x 4¼" x 8" Square Dirt Tamping Pad w/Shank	B91608-012	22.8 # each	1 each
1¼" x 6" x 8" Square Dirt Tamping Pad w/Shank	B91608-412	25.5 # each	1 each
⅞" x 4¼" x 11" Asphalt Cutter 5" x 6"	B00500	5.80 # each	1 each
⅞" x 4¼" x 11" Asphalt Cutter 5" x 6"	B40500	9.10 # each	1 each

SECTION - Description	Product Number	Weight Per	Std Package
Aluminum Caps & Crosses Page 20			
Cap - Flat Blade for 1¾" PSST	850FL175C	0.77 # each	1 each
Cap - Extruded Blade for 1¾" PSST	850XL175C	0.85 # each	1 each
Cap - Flat Blade for 2" PSST	850FL200C	0.68 # each	1 each
Cap - Extruded Blade for 2" PSST	850XL200C	0.78 # each	1 each
90° Cross - Flat Blade	850FL90X	0.59 # each	1 each
90° Cross - Extruded Blade	850XL90X	0.66 # each	1 each
45° Cross - Flat Blade	850FL45X	0.59 # each	1 each
45° Cross - Extruded Blade	850XL45X	0.66 # each	1 each
Cap - Flat Blade for 2⅞" Round Post	808FL238C	0.65 # each	1 each
Cap - Extruded Blade for 2⅞" Round Post	808XL238C	0.71 # each	1 each
Cap - Flat Blade for 1¾" PSST - 12" wide	812FL175C	1.59 # each	1 each
Cap - Extruded Blade for 1¾" PSST - 12" wide	812XL175C	1.65 # each	1 each
Cap - Flat Blade for 2" PSST - 12" wide	812FL200C	1.42 # each	1 each
Cap - Extruded Blade for 2" PSST - 12" wide	812XL200C	1.49 # each	1 each
Cap - Flat Blade for 2⅞" Round Post - 12" wide	812FL238C	1.41 # each	1 each
Cap - Extruded Blade for 2⅞" Round Post - 12" wide	812XL238C	1.48 # each	1 each
90° Cross - Flat Blade - 12" wide	812FL90X	2.03 # each	1 each
90° Cross - Extruded Blade - 12" wide	812XL90X	1.83 # each	1 each
45° Cross - Flat Blade - 12" wide	812FL45X	2.03 # each	1 each
45° Cross - Extruded Blade - 12" wide	812XL45X	1.83 # each	1 each
Pyramid Rain Cap for 1¾" PSST	ARC175	0.18 # each	1 each
Pyramid Rain Cap for 2" PSST	ARC200	0.20 # each	1 each

Galvanized Caps Page 21			
Post Cap for 2½" Square Post	250SQCC	0.21 # each	1 each
Post Cap for 4" Square Post	X4SQCC	0.70 # each	1 each
Post Cap for 2" OD Round Post	200CC-6030	0.11 # each	1 each
Post Cap for 2⅜" OD Round Post (2" SCH 40)	200CC-6005	0.13 # each	1 each
Post Cap for 2⅞" OD Round Post (2½" SCH 40)	250CC-6006	0.17 # each	1 each
Post Cap for 3½" OD Round Post (3" SCH 40)	300CC-6007	0.20 # each	1 each
Post Cap for 4½" OD Round Post (4" SCH 40)	400CC-6009	0.38 # each	1 each
Post Cap for 5½" OD Round Post (5" SCH 40)	500CC-6011-Z	0.57 # each	1 each

Miscellaneous Page 21			
Bolt on Soil Stabilizer for 1¼" to 2½" PSST	SS10-250-Z	5.58 # each	10 each per box
Flag Mount Bracket for ¾" Dowels	FM90B-75-P	1.77 # each	10 each per box
Light Duty Wedge Puller	LDWP	6.75 # each	1 each
Replacement Shaft & Collar	570-S	1.35 # each	10 each per box
Replacement 5# Slide Weight	JR-50	5.10 # each	10 each per box
Replacement Double Hex Coupling Nut	N03-N	0.20 # each	10 each per box
Replacement Shaft Light Duty Hook	JR-58	0.10 # each	10 each per box